

ЛЕВОД

Технические характеристики

По вопросам продаж и поддержки обращайтесь:

Алматы (7273)495-231
Ангарск (3955)60-70-56
Архангельск (8182)63-90-72
Астрахань (8512)99-46-04
Барнаул (3852)73-04-60
Белгород (4722)40-23-64
Благовещенск (4162)22-76-07
Брянск (4832)59-03-52
Владивосток (423)249-28-31
Владикавказ (8672)28-90-48
Владимир (4922)49-43-18
Волгоград (844)278-03-48
Вологда (8172)26-41-59
Воронеж (473)204-51-73
Екатеринбург (343)384-55-89

Иваново (4932)77-34-06
Ижевск (3412)26-03-58
Иркутск (395)279-98-46
Казань (843)206-01-48
Калининград (4012)72-03-81
Калуга (4842)92-23-67
Кемерово (3842)65-04-62
Киров (8332)68-02-04
Коломна (4966)23-41-49
Кострома (4942)77-07-48
Краснодар (861)203-40-90
Красноярск (391)204-63-61
Курск (4712)77-13-04
Курган (3522)50-90-47
Липецк (4742)52-20-81

Магнитогорск (3519)55-03-13
Москва (495)268-04-70
Мурманск (8152)59-64-93
Набережные Челны (8552)20-53-41
Нижегород (831)429-08-12
Новокузнецк (3843)20-46-81
Ноябрьск (3496)41-32-12
Новосибирск (383)227-86-73
Омск (3812)21-46-40
Орел (4862)44-53-42
Оренбург (3532)37-68-04
Пенза (8412)22-31-16
Петрозаводск (8142)55-98-37
Псков (8112)59-10-37
Пермь (342)205-81-47

Ростов-на-Дону (863)308-18-15
Рязань (4912)46-61-64
Самара (846)206-03-16
Санкт-Петербург (812)309-46-40
Саратов (845)249-38-78
Севастополь (8692)22-31-93
Саранск (8342)22-96-24
Симферополь (3652)67-13-56
Смоленск (4812)29-41-54
Сочи (862)225-72-31
Ставрополь (8652)20-65-13
Сургут (3462)77-98-35
Сыктывкар (8212)25-95-17
Тамбов (4752)50-40-97
Тверь (4822)63-31-35

Тольятти (8482)63-91-07
Томск (3822)98-41-53
Тула (4872)33-79-87
Тюмень (3452)66-21-18
Ульяновск (8422)24-23-59
Улан-Удэ (3012)59-97-51
Уфа (347)229-48-12
Хабаровск (4212)92-98-04
Чебоксары (8352)28-53-07
Челябинск (351)202-03-61
Череповец (8202)49-02-64
Чита (3022)38-34-83
Якутск (4112)23-90-97
Ярославль (4852)69-52-93

Россия +7(495)268-04-70

Казахстан +7(7172)727-132

Киргизия +996(312)96-26-47

эл.почта: den@nt-rt.ru || сайт: <https://dcfine.nt-rt.ru/>

4-Methylumbelliferyl- β -D-glucuronide trihydrate

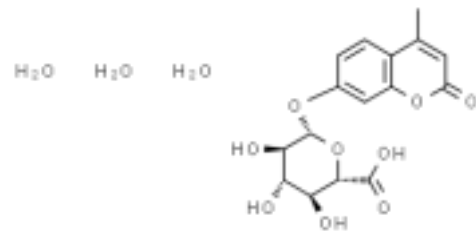
Synonyms: MUG

Code 109070

CAS 6160-80-1

Molar mass 406,33

Formula $C_{16}H_{16}O_9 \cdot 3H_2O$



Product Information

Catalogue Number	109070
CAS Number	6160-80-1
EC No	228-186-0
Formula Hill	$C_{16}H_{16}O_9 \cdot 3H_2O$
Molar Mass	406,33
Classification	Superior

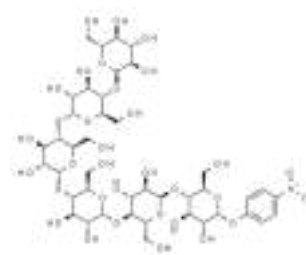
4-Nitrophenyl α -D-maltohexaoside

Code 109530

CAS 74173-30-1

Molar mass 1111,95

Formula $C_{42}H_{65}NO_{33}$



Product Information

Catalogue Number	109530
CAS Number	74173-30-1
Formula Hill	$C_{42}H_{65}NO_{33}$
Molar Mass	1111,95
HS code	29399900
Classification	Superior

Safety Information

Hazard pictogram	
Hazard statement	H315 - Causes skin irritation. H319 - Causes serious eye irritation. H336 - May cause drowsiness or dizziness.
Precautionary statement	P102 - Keep out of reach of children. P103 - Read label before use. P261 - Avoid breathing dust/fume/gas/mist/vapours/spray. P264 - Wash thoroughly after handling. P312 - Call a POISON CENTER/doctor if you feel unwell. P332/313 - If skin irritation occurs: Get medical advice/attention. P403/233 - Store in a well-ventilated place. Keep container tightly closed.
Signal Word	WARNING

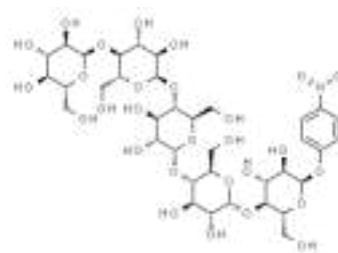
4-Nitrophenyl α -D-maltopentaoside

Code 109540

CAS 66068-38-0

Molar mass 949,81


Formula $C_{36}H_{55}NO_{28}$



Product Information

Catalogue Number	109540
CAS Number	66068-38-0
Formula Hill	$C_{36}H_{55}NO_{28}$
Molar Mass	949,81
HS code	29399900
Classification	Superior

Safety Information

Hazard pictogram	
Hazard statement	H302/312/332 - Harmful if swallowed, in contact with skin or if inhaled. H315 - Causes skin irritation. H319 - Causes serious eye irritation. H335 - May cause respiratory irritation.
Precautionary statement	P102 - Keep out of reach of children. P103 - Read label before use. P261 - Avoid breathing dust/fume/gas/mist/vapours/spray. P264 - Wash thoroughly after handling. P310 - Immediately call a POISON CENTER/doctor. P321 - Specific treatment (see on this label). P403/233 - Store in a well-ventilated place. Keep container tightly closed.
Signal Word	WARNING

5-Bromo-4-chloro-3-indolyl β-D-galactopyranoside

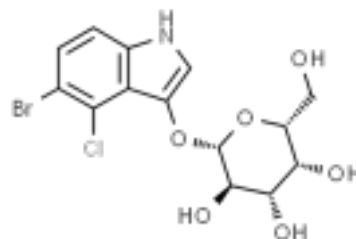
Synonyms: 5-Bromo-4-chloro-3-indolyl β-D-galactoside, BCIG

Code 102080

CAS 7240-90-6

Molar mass 408,63

Formula C₁₄H₁₅BrClNO₆



Product Information

Catalogue Number	102080
CAS Number	7240-90-6
EC No	230-640-8
Formula Hill	C ₁₄ H ₁₅ BrClNO ₆
Molar Mass	408,63
HS code	29349990
Classification	Superior

5-Bromo-4-chloro-3-indolyl β-D-glucuronide sodium

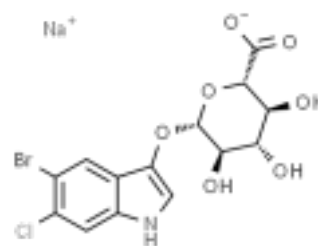
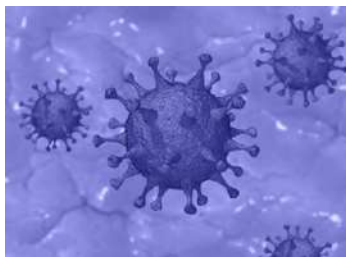
Synonyms: X-glucuronide

Code 102100

CAS 129541-41-9

Molar mass 444,59

Formula $C_{14}H_{12}BrClNaO_7$



Product Information

Catalogue Number	102100
CAS Number	129541-41-9
Formula Hill	$C_{14}H_{12}BrClNaO_7$
Molar Mass	444,59
HS code	29349990
Classification	Superior

5-Bromo-4-chloro-3-indolyl-N-acetyl-β-D-glucosaminide

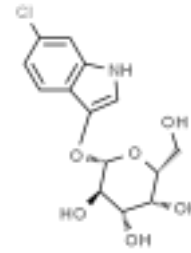
Synonyms: X-N-Acetyl-β-D-glucosaminide, X-Glucosaminide

Code 124960

CAS 4264-82-8

Molar mass 449,68


Formula C₁₆H₁₈BrClN₂O₆



Product Information

Catalogue Number	124960
CAS Number	4264-82-8
Formula Hill	C ₁₆ H ₁₈ BrClN ₂ O ₆
Molar Mass	449,68
HS code	29349990
Classification	Superior

Safety Information

Hazard pictogram	
Hazard statement	H315 - Causes skin irritation. H319 - Causes serious eye irritation. H336 - May cause drowsiness or dizziness.
Precautionary statement	P102 - Keep out of reach of children. P103 - Read label before use. P261 - Avoid breathing dust/fume/gas/mist/vapours/spray. P264 - Wash thoroughly after handling. P312 - Call a POISON CENTER/doctor if you feel unwell. P332/313 - If skin irritation occurs: Get medical advice/attention. P403/233 - Store in a well-ventilated place. Keep container tightly closed.
Signal Word	WARNING

5-Bromo-4-chloro-3-indolyl-β-D-glucuronide, cyclohexylammonium salt

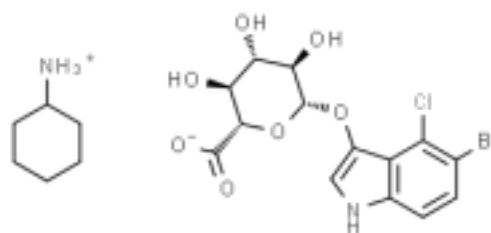
Synonyms: X-Glucuronide CHA salt, X-GlcA

Code 102090

CAS 114162-64-0

Molar mass 521,79

Formula $C_{20}H_{26}BrClN_2O_7$



Product Information

Catalogue Number	102090
CAS Number	114162-64-0
Formula Hill	$C_{20}H_{26}BrClN_2O_7$
Molar Mass	521,79
HS code	29349990
Classification	Superior

5-Bromo-4-chloro-3-indolyl- α -D-galactopyranoside

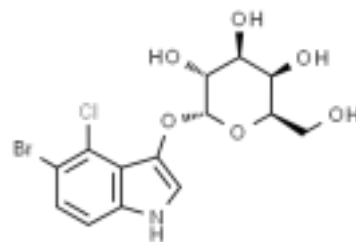
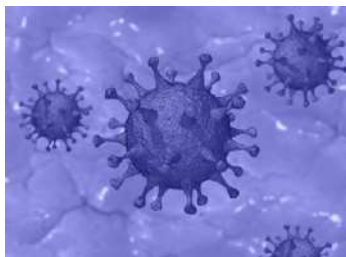
Synonyms: X- α -D-Galactoside, X- α -Gal

Code 125220

CAS 107021-38-5

Molar mass 408,63

Formula $C_{14}H_{15}BrClNO_6$



Product Information

Catalogue Number	125220
CAS Number	107021-38-5
Formula Hill	$C_{14}H_{15}BrClNO_6$
Molar Mass	408,63
HS code	2940000080
Classification	Superior

5-Bromo-4-chloro-3-indolyl- α -D-glucopyranoside

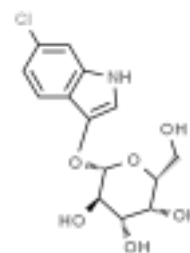
Synonyms: X- α -Glucoside

Code 124980

CAS 108789-36-2

Molar mass 408,63

Formula $C_{14}H_{15}BrClNO_6$



Product Information

Catalogue Number	124980
CAS Number	108789-36-2
Formula Hill	$C_{14}H_{15}BrClNO_6$
Molar Mass	408,63
HS code	29400000
Classification	Superior

5-Bromo-4-chloro-3-indolyl-β-D-cellobioside

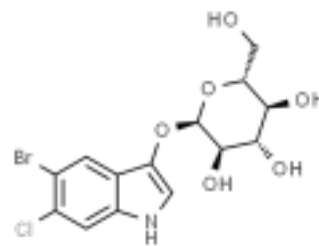
Synonyms: X-Cellobioside

Code 125030

CAS 177966-52-8

Molar mass 570,77

Formula $C_{20}H_{25}BrClNO_{11}$



Product Information

Catalogue Number	125030
CAS Number	177966-52-8
Formula Hill	$C_{20}H_{25}BrClNO_{11}$
Molar Mass	570,77
Classification	Superior

5-Bromo-6-chloro-3-indolyl- α -D-glucopyranoside

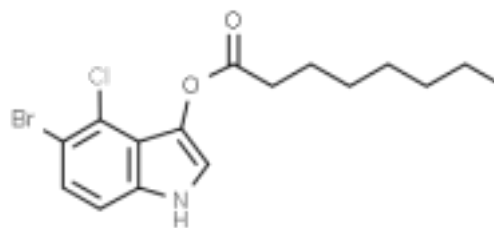
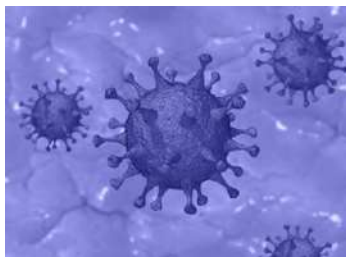
Synonyms: Magenta- α -D-glucoside

Code 125010

CAS 878495-64-8

Molar mass 409,63

Formula $C_{14}H_{15}BrClNO_6$



Product Information

Catalogue Number	125010
CAS Number	878495-64-8
Formula Hill	$C_{14}H_{15}BrClNO_6$
Molar Mass	409,63
Classification	Superior

5-Bromo-6-chloro-3-indolyl-β-D-galactopyranoside

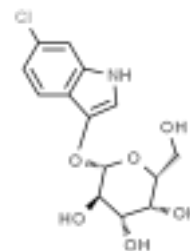
Synonyms: Magenta-gal

Code 124970

CAS 93863-88-8

Molar mass 408,63

Formula C₁₄H₁₅BrClNO₆



Product Information

Catalogue Number	124970
CAS Number	93863-88-8
Formula Hill	C ₁₄ H ₁₅ BrClNO ₆
Molar Mass	408,63
HS code	29349990
Classification	Superior

Safety Information

Hazard pictogram	
Hazard statement	H315 - Causes skin irritation. H319 - Causes serious eye irritation. H335 - May cause respiratory irritation.
Precautionary statement	P102 - Keep out of reach of children. P103 - Read label before use. P261 - Avoid breathing dust/fume/gas/mist/vapours/spray. P264 - Wash thoroughly after handling. P312 - Call a POISON CENTER/doctor if you feel unwell. P332/313 - If skin irritation occurs: Get medical advice/attention. P403/233 - Store in a well-ventilated place. Keep container tightly closed.
Signal Word	WARNING

5-Bromo-6-chloro-3-indolyl-β-D-glucuronide, cyclohexylammonium salt

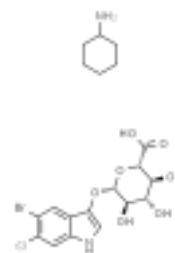
Synonyms: Magenta-gluc CHA salt, Magenta-GlcA CHA salt

Code 125240

CAS 144110-43-0

Molar mass 521,79

Formula $C_{14}H_{13}BrClNO_7 \cdot C_6H_{13}N$



Product Information

Catalogue Number	125240
CAS Number	144110-43-0
Formula Hill	$C_{14}H_{13}BrClNO_7 \cdot C_6H_{13}N$
Molar Mass	521,79
HS code	29349900
Classification	Superior

5-Keto-D-gluconic acid potassium salt

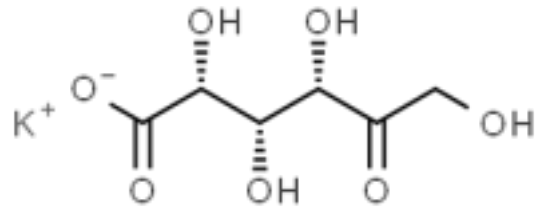
Synonyms: D-Xylo-5-hexulofuranosonic acid potassium salt

Code 107710

CAS 91446-96-7

Molar mass 232,23

Formula $C_6H_9KO_7$



Product Information

Catalogue Number	107710
CAS Number	91446-96-7
Formula Hill	$C_6H_9KO_7$
Chemical formula	$C_6H_9KO_7$
Molar Mass	232,23
HS code	29189990
Classification	Premium

Safety Information

Hazard pictogram	A red diamond-shaped hazard pictogram with a black exclamation mark in the center.
Hazard statement	H315 - Causes skin irritation. H319 - Causes serious eye irritation. H335 - May cause respiratory irritation.
Precautionary statement	P102 - Keep out of reach of children. P103 - Read label before use. P261 - Avoid breathing dust/fume/gas/mist/vapours/spray. P264 - Wash thoroughly after handling. P312 - Call a POISON CENTER/doctor if you feel unwell. P332/313 - If skin irritation occurs: Get medical advice/attention. P403/233 - Store in a well-ventilated place. Keep container tightly closed.
Signal Word	WARNING

(* Usually in stock)

6-Chloro-3-indolyl-β-D-galactopyranoside

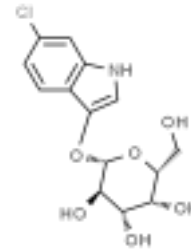
Synonyms: Salmon-gal

Code 103380

CAS 138182-21-5

Molar mass 329,73

Formula C₁₄H₁₆ClNO₆



Product Information

Catalogue Number	103380
CAS Number	138182-21-5
Formula Hill	C ₁₄ H ₁₆ ClNO ₆
Molar Mass	329,73
HS code	29349990
Classification	Superior

6-Chloro-3-indolyl- α -D-galactopyranoside

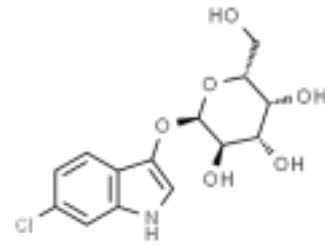
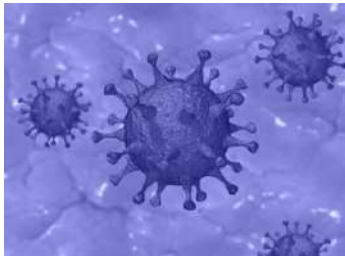
Synonyms: Salmon- α -gal

Code 125260

CAS 198402-61-8

Molar mass 329,73

Formula $C_{14}H_{16}ClNO_6$



Product Information

Catalogue Number	125260
CAS Number	198402-61-8
Formula Hill	$C_{14}H_{16}ClNO_6$
Molar Mass	329,73
HS code	29389090
Classification	Superior

6-Chloro-3-indolyl-β-D-glucopyranoside

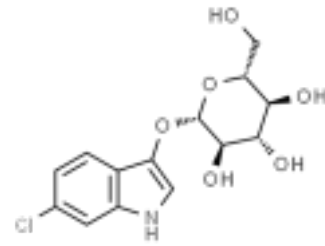
Synonyms: Salmon-glucoside

Code 125250

CAS 159954-28-6

Molar mass 329,73

Formula C₁₄H₁₆ClNO₆



Product Information

Catalogue Number	125250
CAS Number	159954-28-6
Formula Hill	C ₁₄ H ₁₆ ClNO ₆
Molar Mass	329,73
HS code	2940000080
Classification	Superior

6-Chloro-3-indolyl-β-D-glucuronide, cyclohexylammonium salt

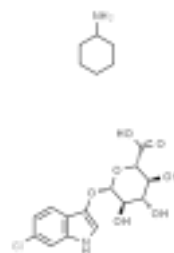
Synonyms: Salmon-gluc CHA salt, Salmon-glcA CHA salt

Code 125230

CAS 138182-20-4

Molar mass 442,89

Formula $C_{14}H_{14}ClNO_7 \cdot C_6H_{13}N$



Product Information

Catalogue Number	125230
CAS Number	138182-20-4
Formula Hill	$C_{14}H_{14}ClNO_7 \cdot C_6H_{13}N$
Molar Mass	442,89
HS code	29389090
Classification	Superior

Adonitol

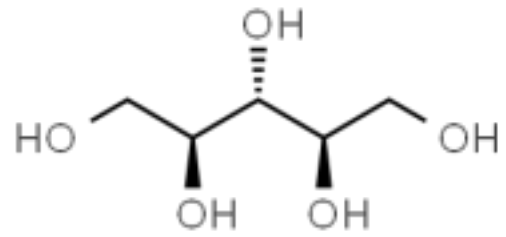
Synonyms: D-Ribitol, Adonite

Code 100310

CAS 488-81-3

Molar mass 152,15

Formula $C_5H_{12}O_5$



Product Information

Catalogue Number	100310
CAS Number	488-81-3
EC No	207-685-7
Formula Hill	$C_5H_{12}O_5$
Molar Mass	152,15
HS code	29054900
Classification	Superior

Arbutin

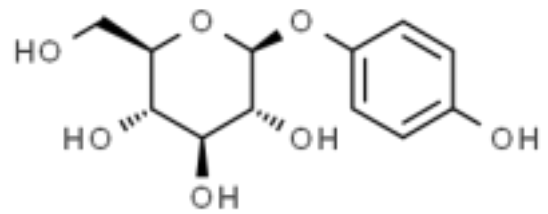
Synonyms: Hydroquinone β -D-glucopyranoside, 4-Hydroxyphenyl- β -D-glucopyranoside

Code 101230

CAS 497-76-7

Molar mass 272,25

Formula $C_{12}H_{16}O_7$



Product Information

Catalogue Number	101230
CAS Number	497-76-7
EC No	207-850-3
Formula Hill	$C_{12}H_{16}O_7$
Molar Mass	272,25
HS code	29389090
Classification	Superior

Calcium carboxymethyl cellulose, Ph. Eur., NF

Code 114970

CAS 9050-04-8

Formula



Product Information

Catalogue Number	114970
CAS Number	9050-04-8
HS code	39123100
Classification	Premium

Calcium D-gluconate monohydrate for injection, USP

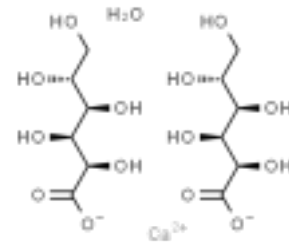
Synonyms: D-Gluconic acid calcium salt

Code 102713

CAS 66905-23-5

Molar mass 448,4

Formula $C_{12}H_{22}CaO_{14} \cdot H_2O$



Product Information

Catalogue Number	102713
CAS Number	66905-23-5
EC No	206-075-8
Formula Hill	$C_{12}H_{22}CaO_{14} \cdot H_2O$
Molar Mass	448,4
HS code	29181600
Classification	Premium

Calcium D-gluconate monohydrate, Ph. Eur.

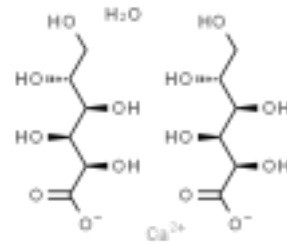
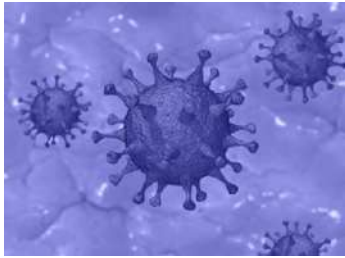
Synonyms: D-Gluconic acid calcium salt

Code 102711

CAS 66905-23-5

Molar mass 448,4

Formula $C_{12}H_{22}CaO_{14} \cdot H_2O$



Product Information

Catalogue Number	102711
CAS Number	66905-23-5
EC No	206-075-8
Formula Hill	$C_{12}H_{22}CaO_{14} \cdot H_2O$
Molar Mass	448,4
HS code	29181600
Classification	Premium

Calcium D-gluconate monohydrate, Ph. Eur., for injection

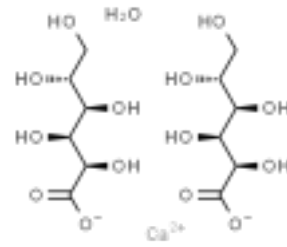
Synonyms: D-Gluconic acid calcium salt

Code 102710

CAS 66905-23-5

Molar mass 448,4

Formula $C_{12}H_{22}CaO_{14} \cdot H_2O$



Product Information

Catalogue Number	102710
CAS Number	66905-23-5
EC No	206-075-8
Formula Hill	$C_{12}H_{22}CaO_{14} \cdot H_2O$
Molar Mass	448,4
HS code	29181600
Classification	Premium

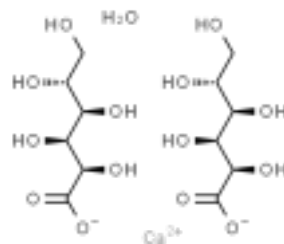
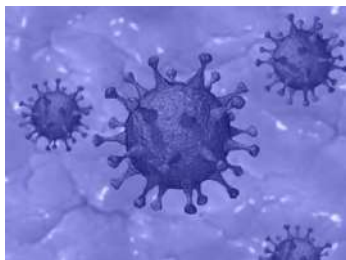
Calcium D-gluconate monohydrate, USP

Code 102712

CAS 66905-23-5

Molar mass 448,4

Formula $C_{12}H_{22}CaO_{14} \cdot H_2O$



Product Information

Catalogue Number	102712
CAS Number	66905-23-5
EC No	206-075-8
Formula Hill	$C_{12}H_{22}CaO_{14} \cdot H_2O$
Molar Mass	448,4
HS code	29181600
Classification	Premium

(* Usually in stock)

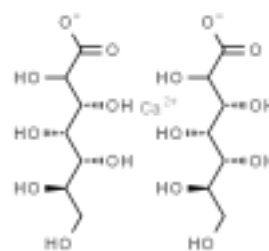
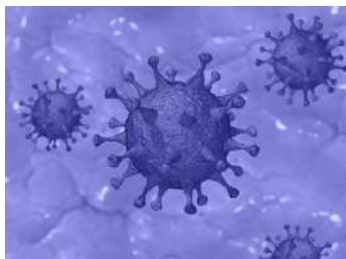
Calcium glucoheptonate, USP

Code 102731

CAS 29039-00-7

Molar mass 490,4

Formula $C_{14}H_{26}CaO_{16}$



Product Information

Catalogue Number	102731
CAS Number	29039-00-7
EC No	249-383-8
Formula Hill	$C_{14}H_{26}CaO_{16}$
Molar Mass	490,4
Classification	Premium

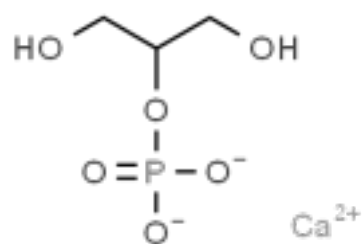
Calcium glycerophosphate

Code 102740

CAS 27214-00-2

Molar mass 210,1

Formula $C_3H_7CaO_6P$



Product Information

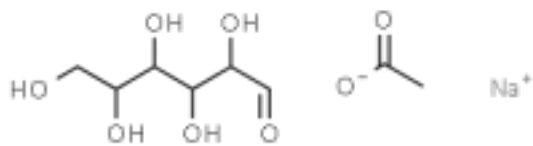
Catalogue Number	102740
CAS Number	27214-00-2
EC No	248-328-5
Formula Hill	$C_3H_7CaO_6P$
Molar Mass	210,1
HS code	29199000
Classification	Superior

Carboxymethylcellulose sodium salt, low viscosity

Code 118070

CAS 9004-32-4

Formula



Product Information

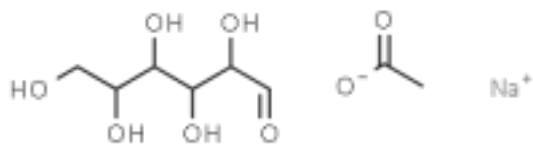
Catalogue Number	118070
CAS Number	9004-32-4
HS code	39123100

Carboxymethylcellulose sodium salt, medium viscosity

Code 118071

CAS 9004-32-4

Formula



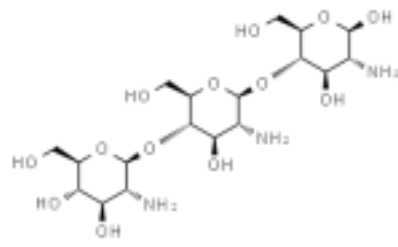
Product Information

Catalogue Number	118071
CAS Number	9004-32-4
HS code	39123100
Classification	Superior

Chitosan

Code 103271

CAS 9012-76-4



Product Information

Catalogue Number	103271
CAS Number	9012-76-4
HS code	39139000
Classification	Superior

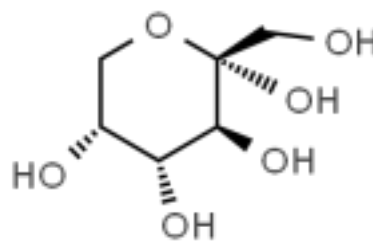
D(-)-Fructose, Ph. Eur., USP

Code 118990

CAS 57-48-7

Molar mass 180,15

Formula $C_6H_{12}O_6$



Product Information

Catalogue Number	118990
CAS Number	57-48-7
EC No	200-333-3
Formula Hill	$C_6H_{12}O_6$
Molar Mass	180,15
HS code	17025000
Classification	Premium

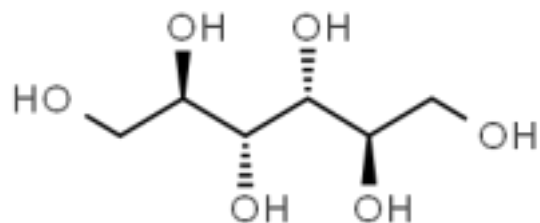
D(-)-Mannitol, ACS

Code 108183

CAS 69-65-8

Molar mass 182,17

Formula $C_6H_{14}O_6$



Product Information

Catalogue Number	108183
CAS Number	69-65-8
EC No	200-711-8
Formula Hill	$C_6H_{14}O_6$
Chemical formula	$C_6H_{14}O_6$
Molar Mass	182,17
HS code	29054300
REACH Registration no.	Exemption from REACH by Annex IV
Classification	Superior

(* Usually in stock)

D(-)-Mannitol, Ph. Eur., for parenteral use

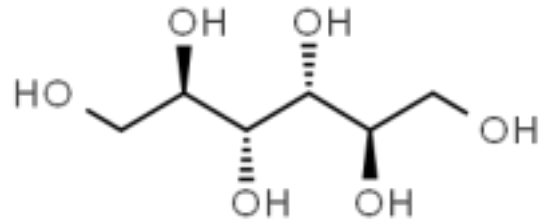
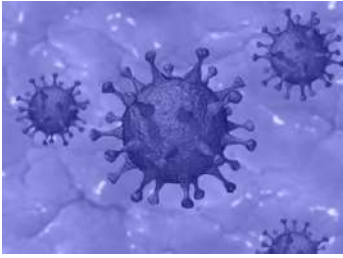
Synonyms: D-Mannitol, Mannite

Code 108185

CAS 69-65-8

Molar mass 182,17

Formula C₆H₁₄O₆



Product Information

Catalogue Number	108185
CAS Number	69-65-8
EC No	200-711-8
Formula Hill	C ₆ H ₁₄ O ₆
Chemical formula	C ₆ H ₁₄ O ₆
Molar Mass	182,17
HS code	29054300
Classification	Premium

D(-)-Mannitol, Ph. Eur., USP

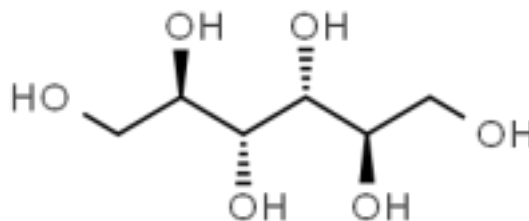
Synonyms: Mannite, D-Mannitol

Code 108182

CAS 69-65-8

Molar mass 182,17

Formula C₆H₁₄O₆



Product Information

Catalogue Number	108182
CAS Number	69-65-8
EC No	200-711-8
Formula Hill	C ₆ H ₁₄ O ₆
Chemical formula	C ₆ H ₁₄ O ₆
Molar Mass	182,17
HS code	29054300
REACH Registration no.	Exemption from REACH by Annex IV
Classification	Premium

(* Usually in stock)

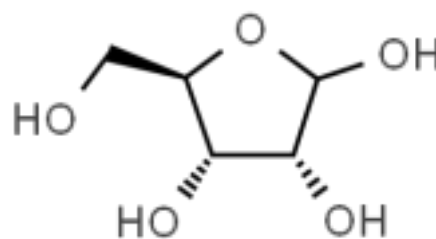
D(-)-Ribose

Code 111180

CAS 50-69-1

Molar mass 150,13

Formula $C_5H_{10}O_5$



Product Information

Catalogue Number	111180
CAS Number	50-69-1
EC No	200-059-4
Formula Hill	$C_5H_{10}O_5$
Molar Mass	150,13
HS code	2940000080
Classification	Superior

(* Usually in stock)

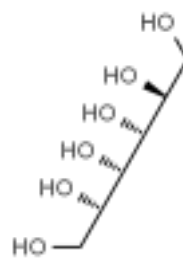
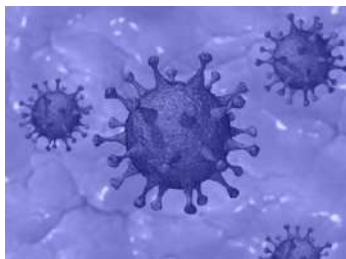
D(-)-Sorbitol, for microbiology

Code 119202

CAS 50-70-4

Molar mass 182,17

Formula $C_6H_{14}O_6$



Product Information

Catalogue Number	119202
CAS Number	50-70-4
EC No	200-061-5
Formula Hill	$C_6H_{14}O_6$
Chemical formula	$C_6H_{14}O_6$
Molar Mass	182,17
HS code	29054400
Classification	Premium

D(+)-Arabitol

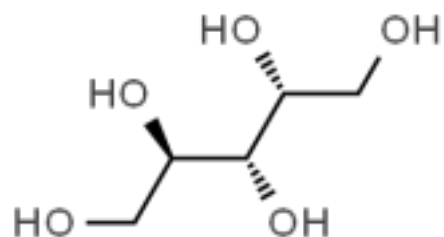
Synonyms: D-Lyxitol

Code 101210

CAS 488-82-4

Molar mass 152,15

Formula $C_5H_{12}O_5$



Product Information

Catalogue Number	101210
CAS Number	488-82-4
EC No	207-686-2
Formula Hill	$C_5H_{12}O_5$
Molar Mass	152,15
HS code	29054900
Classification	Superior

D(+)-Cellobiose

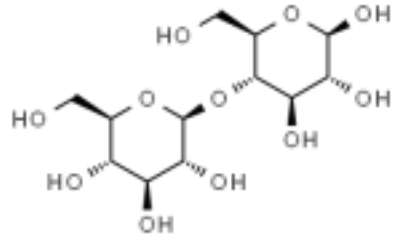
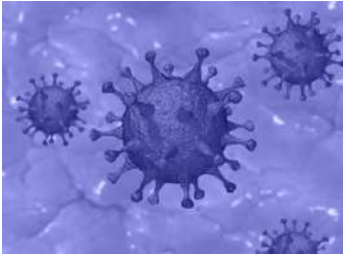
Synonyms: 4-O- β -D-Glucopyranosyl-D-glucose

Code 103150

CAS 528-50-7

Molar mass 342,2

Formula $C_{12}H_{22}O_{11}$



Product Information

Catalogue Number	103150
CAS Number	528-50-7
EC No	208-436-5
Formula Hill	$C_{12}H_{22}O_{11}$
Molar Mass	342,2
HS code	29400000
Classification	Superior

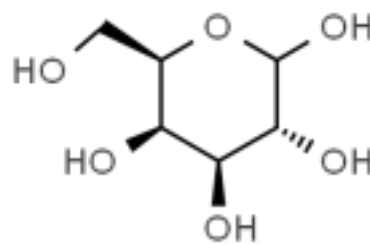
D(+)-Galactose

Code 106370

CAS 59-23-4

Molar mass 180,16

Formula $C_6H_{12}O_6$



Product Information

Catalogue Number	106370
CAS Number	59-23-4
EC No	200-416-4
Formula Hill	$C_6H_{12}O_6$
Molar Mass	180,16
HS code	29400000
Classification	Superior

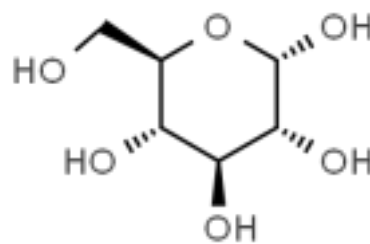
D(+)-Glucose anhydrous, ACS

Code 116462

CAS 50-99-7

Molar mass 180,2

Formula $C_6H_{12}O_6$



Product Information

Catalogue Number	116462
CAS Number	50-99-7
EC No	200-075-1
Formula Hill	$C_6H_{12}O_6$
Molar Mass	180,2
HS code	17023050
REACH Registration no.	Exemption from REACH by Annex IV
Classification	Superior

(* Usually in stock)

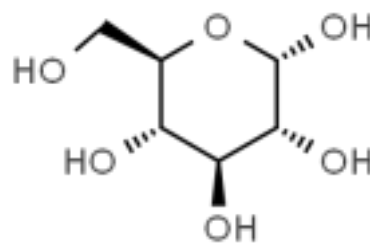
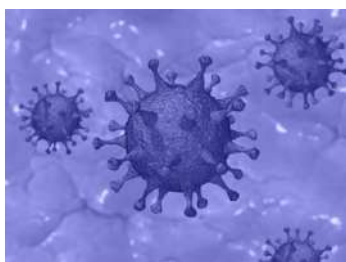
D(+)-Glucose anhydrous, Ph. Eur., USP

Code 116460

CAS 50-99-7

Molar mass 180,2

Formula C₆H₁₂O₆



Product Information

Catalogue Number	116460
CAS Number	50-99-7
EC No	200-075-1
Formula Hill	C ₆ H ₁₂ O ₆
Molar Mass	180,2
HS code	17023050
REACH Registration no.	Exemption from REACH by Annex IV
Classification	Premium

(* Usually in stock)

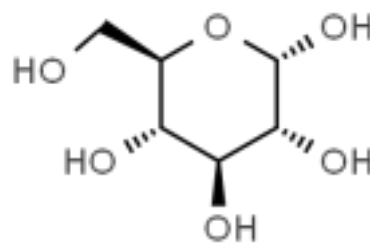
D(+)-Glucose anhydrous, Ph. Eur., USP, low endotoxin

Code 116463

CAS 50-99-7

Molar mass 180,2

Formula C₆H₁₂O₆



Product Information

Catalogue Number	116463
CAS Number	50-99-7
EC No	200-075-1
Formula Hill	C ₆ H ₁₂ O ₆
Molar Mass	180,2
HS code	17023050
REACH Registration no.	Exemption from REACH by Annex IV
Classification	Premium

D(+)-Glucose monohydrate, Ph. Eur., USP

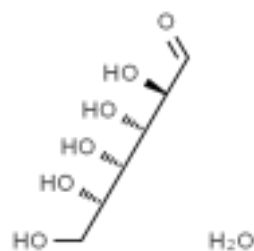
Synonyms: Dextrose monohydrate

Code 106480

CAS 14431-43-7

Molar mass 198,17

Formula $C_6H_{12}O_6 \cdot H_2O$



Product Information

Catalogue Number	106480
CAS Number	14431-43-7
EC No	200-075-1
Formula Hill	$C_6H_{12}O_6 \cdot H_2O$
Molar Mass	198,17
HS code	17023050
Classification	Premium

(* Usually in stock)

D(+)-Glucose monohydrate, Ph. Eur., USP, low endotoxin

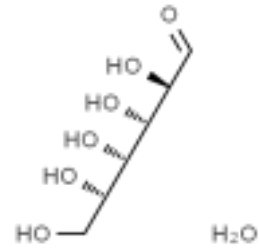
Synonyms: Dextrose monohydrate

Code 106482

CAS 14431-43-7

Molar mass 198,17

Formula $C_6H_{12}O_6 \cdot H_2O$



Product Information

Catalogue Number	106482
CAS Number	14431-43-7
EC No	200-075-1
Formula Hill	$C_6H_{12}O_6 \cdot H_2O$
Molar Mass	198,17
HS code	17023050
Classification	Premium

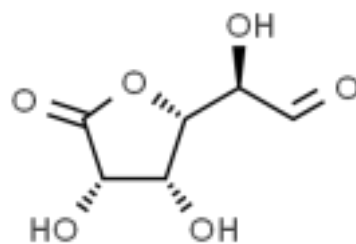
D-(+)-Glucuronolactone

Code 106500

CAS 32449-92-6

Molar mass 176,12

Formula $C_6H_8O_6$



Product Information

Catalogue Number	106500
CAS Number	32449-92-6
EC No	251-053-3
Formula Hill	$C_6H_8O_6$
Molar Mass	176,12
HS code	29322980
Classification	Superior

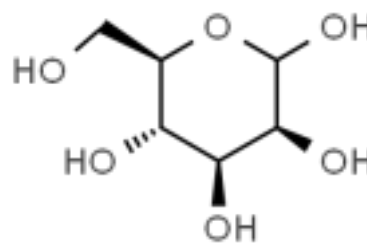
D(+)-Mannose

Code 108190

CAS 3458-28-4

Molar mass 180,16

Formula $C_6H_{12}O_6$



Product Information

Catalogue Number	108190
CAS Number	3458-28-4
EC No	222-392-4
Formula Hill	$C_6H_{12}O_6$
Molar Mass	180,16
HS code	29400000
Classification	Superior

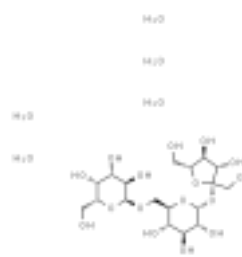
D-(+)-Raffinose pentahydrate

Code 113850

CAS 17629-30-0

Molar mass 594,52

Formula $C_{18}H_{42}O_{21}$



Product Information

Catalogue Number	113850
CAS Number	17629-30-0
EC No	208-146-9
Formula Hill	$C_{18}H_{42}O_{21}$
Molar Mass	594,52
HS code	29400000
Classification	Superior

(* Usually in stock)

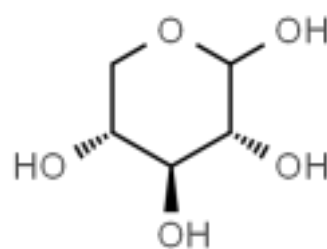
D(+)-Xylose

Code 113631

CAS 58-86-6

Molar mass 150,13

Formula $C_5H_{10}O_5$



Product Information

Catalogue Number	113631
CAS Number	58-86-6
EC No	200-400-7
Formula Hill	$C_5H_{10}O_5$
Molar Mass	150,13
HS code	29400000
Classification	Superior

(* Usually in stock)

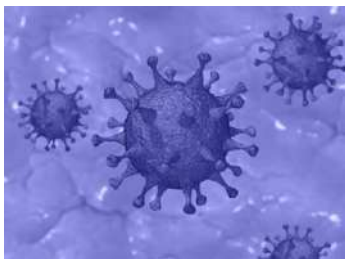
D(+)-Xylose, Ph. Eur.

Code 113632

CAS 58-86-6

Molar mass 150,13

Formula $C_5H_{10}O_5$



Product Information

Catalogue Number	113632
CAS Number	58-86-6
EC No	200-400-7
Formula Hill	$C_5H_{10}O_5$
Molar Mass	150,13
HS code	2940000020
Classification	Premium

(* Usually in stock)

D-Amygdalin

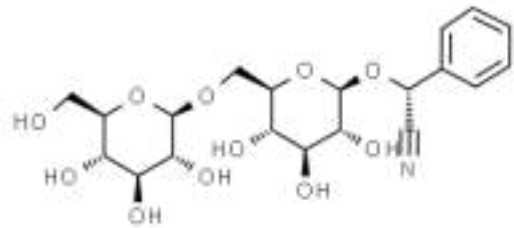
Synonyms: D-Mandelonitrile-b-gentiobioside

Code 101110

CAS 29883-15-6

Molar mass 457,43


Formula C₂₀H₂₇NO₁₁



Product Information

Catalogue Number	101110
Synonyms	D-Mandelonitrile-b-gentiobioside
CAS Number	29883-15-6
EC No	249-925-3
Formula Hill	C ₂₀ H ₂₇ NO ₁₁
Molar Mass	457,43
HS code	29389090
Classification	Superior

Safety Information

Hazard pictogram	
Hazard statement	H302 - Harmful if swallowed.
Precautionary statement	P102 - Keep out of reach of children. P103 - Read label before use. P264 - Wash thoroughly after handling. P270 - Do not eat, drink or smoke when using this product. P301/310 - IF SWALLOWED: Immediately call a POISON CENTER/doctor. P330 - Rinse mouth. P501 - Dispose of content / container in accordance with procedures.
Signal Word	WARNING

(* Usually in stock)

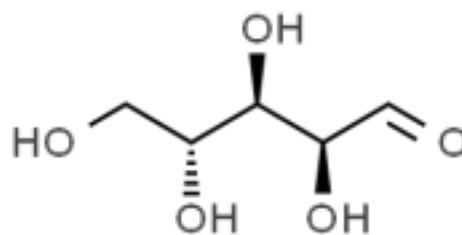
D-Arabinose

Code 101190

CAS 10323-20-3

Molar mass 150,13

Formula $C_5H_{10}O_5$



Product Information

Catalogue Number	101190
CAS Number	10323-20-3
EC No	233-708-5
Formula Hill	$C_5H_{10}O_5$
Molar Mass	150,13
HS code	29400000
Classification	Superior

Dextran 40.000, Ph. Eur.

Code 104482

CAS 9004-54-0

Molar mass 40000

Formula $(C_6H_{10}O_5)_n$



Product Information

Catalogue Number	104482
CAS Number	9004-54-0
EC No	232-677-5
Formula Hill	$(C_6H_{10}O_5)_n$
Chemical formula	$(C_6H_{10}O_5)_n$
Molar Mass	40000
HS code	39139000
REACH Registration no.	EXEMPT ORIGEN NATURAL
Classification	Premium

(* Usually in stock)

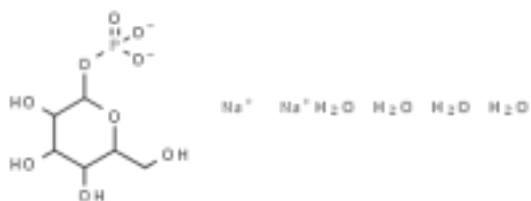
D-Glucose-1-phosphate disodium salt tetrahydrate

Code 106490

CAS 150399-99-8

Molar mass 376,16

Formula $C_6H_{11}Na_2O_9P \cdot H_2O$



Product Information

Catalogue Number	106490
CAS Number	150399-99-8
EC No	260-154-1
Formula Hill	$C_6H_{11}Na_2O_9P \cdot H_2O$
Molar Mass	376,16
Classification	Superior

D-Glucose-6-phosphate disodium salt

Code 120120

CAS



Product Information

Catalogue Number	120120
HS code	29400000
Classification	Superior

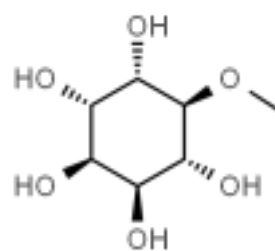
D-Pinitol

Code 110290

CAS 10284-63-6

Molar mass 194,18

Formula $C_7H_{14}O_6$



Product Information

Catalogue Number	110290
CAS Number	10284-63-6
Formula Hill	$C_7H_{14}O_6$
Molar Mass	194,18
HS code	2906190090
Classification	Superior

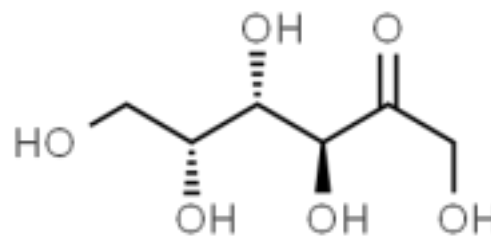
D-Tagatose

Code 112370

CAS

Molar mass 180,16

Formula $C_6H_{12}O_6$



Product Information

Catalogue Number	112370
EC No	201-772-3
Formula Hill	$C_6H_{12}O_6$
Molar Mass	180,16
HS code	2940006000
Classification	Superior

D-Turanose

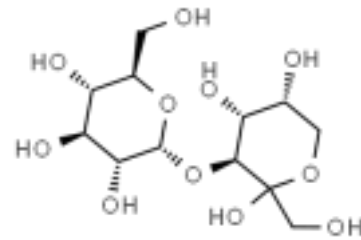
Synonyms: S 3-O- α -D-Glucopyranosyl-D-fructose, 3-O- α -D-Glucopyranosyl-D-fructose

Code 113430

CAS 547-25-1

Molar mass 342,3

Formula $C_{12}H_{22}O_{11}$



Product Information

Catalogue Number	113430
Synonyms	S 3-O- α -D-Glucopyranosyl-D-fructose
CAS Number	547-25-1
EC No	208-918-5
Formula Hill	$C_{12}H_{22}O_{11}$
Molar Mass	342,3
HS code	2940006000
Classification	Premium

Esculin, for microbiology

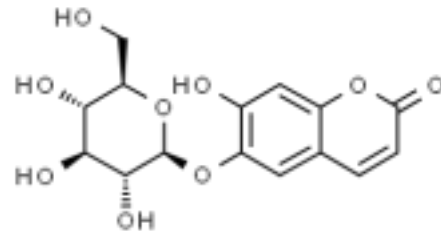
Synonyms: Esculin

Code 105700

CAS 66778-17-4

Molar mass 367,31

Formula $C_{15}H_{16}O_9 \cdot 1,5H_2O$



Product Information

Catalogue Number	105700
CAS Number	66778-17-4
EC No	208-517-5
Formula Hill	$C_{15}H_{16}O_9 \cdot 1,5H_2O$
Chemical formula	$C_{15}H_{16}O_9 \cdot 1,5H_2O$
Molar Mass	367,31
HS code	29389090
Classification	Superior

(* Usually in stock)

Gluconolactone USP

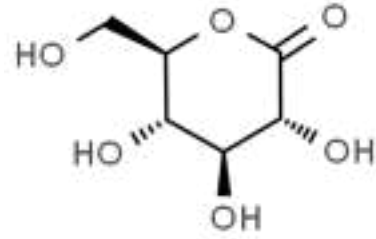
Synonyms: D-(+)-Gluconic acid δ -lactone

Code 119170

CAS 90-80-2

Molar mass 178,14

Formula $C_6H_{10}O_6$



Product Information

Catalogue Number	119170
Synonyms	D-(+)-Gluconic acid δ -lactone
CAS Number	90-80-2
EC No	202-016-5
Formula Hill	$C_6H_{10}O_6$
Molar Mass	178,14
HS code	29322090
Classification	Premium

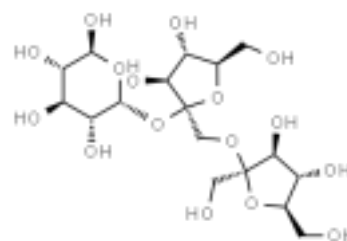
Inulin

Code 120411

CAS 9005-80-5

Molar mass 490,41

Formula $C_{17}H_{30}O_{16}$



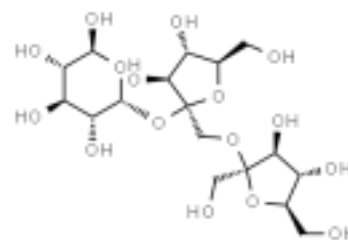
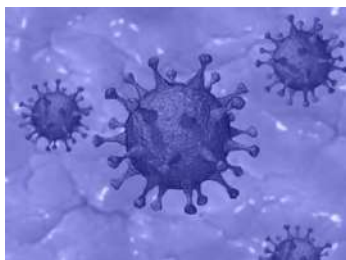
Product Information

Catalogue Number	120411
CAS Number	9005-80-5
EC No	232-684-3
Formula Hill	$C_{17}H_{30}O_{16}$
Molar Mass	490,41
HS code	11082000
Classification	Superior

Inulin, from chicory

Code 120410

CAS 9005-80-5



Product Information

Catalogue Number	120410
CAS Number	9005-80-5
EC No	232-684-3
HS code	11082000
Classification	Superior

(* Usually in stock)

L(-)-Arabitol

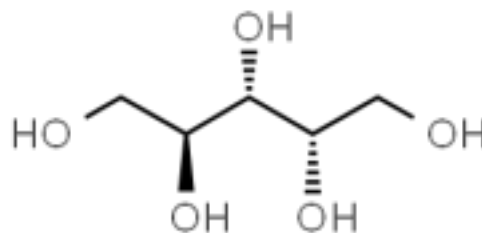
Synonyms: L-Arabinitol

Code 101220

CAS 7643-75-6

Molar mass 152,15

Formula C₅H₁₂O₅



Product Information

Catalogue Number	101220
CAS Number	7643-75-6
EC No	231-582-6
Formula Hill	C ₅ H ₁₂ O ₅
Molar Mass	152,15
HS code	29054900
Classification	Superior

L-(-)-Fucose

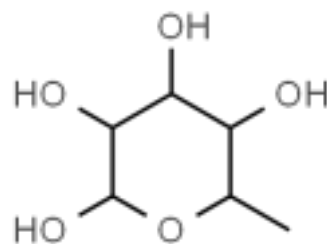
Synonyms: 6-Deoxy-L-galactose

Code 120770

CAS 2438-80-4

Molar mass 164,16

Formula C₆H₁₂O₅



Product Information

Catalogue Number	120770
Synonyms	6-Deoxy-L-galactose
CAS Number	2438-80-4
EC No	219-452-7
Formula Hill	C ₆ H ₁₂ O ₅
Molar Mass	164,16
HS code	29400000
Classification	Premium

(* Usually in stock)

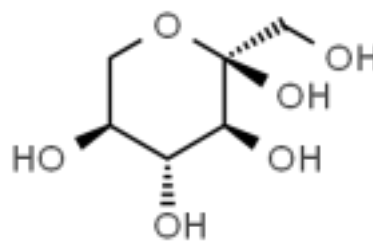
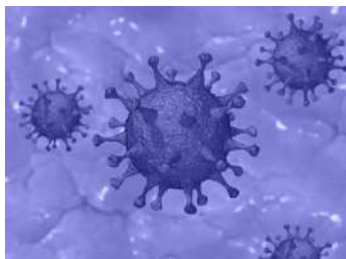
L(-)-Sorbitose

Code 112100

CAS 87-79-6

Molar mass 180,16

Formula $C_6H_{12}O_6$



Product Information

Catalogue Number	112100
CAS Number	87-79-6
EC No	201-771-8
Formula Hill	$C_6H_{12}O_6$
Molar Mass	180,16
HS code	29400000

L(+)-Arabinose

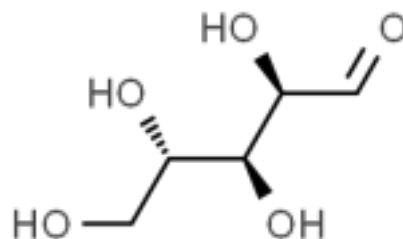
Synonyms: (2R,3S,4S)-2,3,4,5-tetrahydroxypentanal, Pectinose

Code 101200

CAS 5328-37-0

Molar mass 150,13

Formula C₅H₁₀O₅



Product Information

Catalogue Number	101200
CAS Number	5328-37-0
EC No	226-214-6
Formula Hill	C ₅ H ₁₀ O ₅
Molar Mass	150,13
HS code	29400000
Classification	Superior

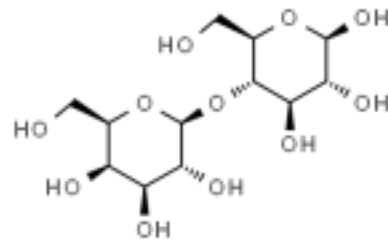
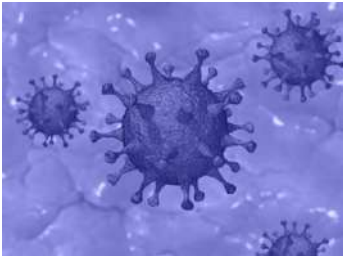
Lactose anhydrous

Code 107780

CAS 63-42-3

Molar mass 342,3

Formula $C_{12}H_{22}O_{11}$



Product Information

Catalogue Number	107780
CAS Number	63-42-3
EC No	200-559-2
Formula Hill	$C_{12}H_{22}O_{11}$
Molar Mass	342,3
HS code	17021100
Classification	Superior

Lactose monohydrate direct compressible, Ph. Eur.

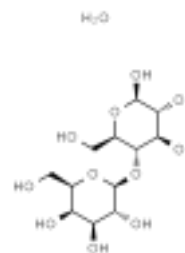
Synonyms: β -D-Gal-(1 \rightarrow 4)-D-Glc, 4-O- β -D-Galactopyranosyl-D-glucose, Milk sugar

Code 107793

CAS 10039-26-6

Molar mass 360,32

Formula $C_{12}H_{22}O_{11} \cdot H_2O$



Product Information

Catalogue Number	107793
CAS Number	10039-26-6
EC No	200-559-2
Formula Hill	$C_{12}H_{22}O_{11} \cdot H_2O$
Molar Mass	360,32
HS code	17021100
Classification	Premium

Lactose monohydrate, Ph. Eur.

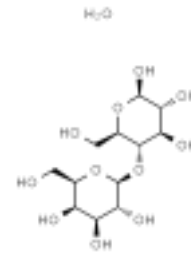
Synonyms: β -D-Gal-(1 \rightarrow 4)-D-Glc, Milk sugar, 4-O- β -D-Galactopyranosyl-D-glucose

Code 107790

CAS 10039-26-6

Molar mass 360,32

Formula $C_{12}H_{22}O_{11} \cdot H_2O$



Product Information

Catalogue Number	107790
CAS Number	10039-26-6
EC No	200-559-2
Formula Hill	$C_{12}H_{22}O_{11} \cdot H_2O$
Molar Mass	360,32
HS code	17021100
Classification	Premium

(* Usually in stock)

L-alpha-Lysophosphatidylinositol sodium salt

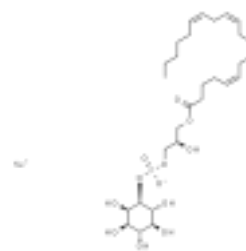
Synonyms: L- α -lysophosphatidylinositol sodium salt

Code 100410

CAS 796963-91-2

Molar mass 606,6

Formula $C_{26}H_{48}NaO_{12}P$



Product Information

Catalogue Number	100410
CAS Number	796963-91-2
Formula Hill	$C_{26}H_{48}NaO_{12}P$
Molar Mass	606,6
Classification	Superior

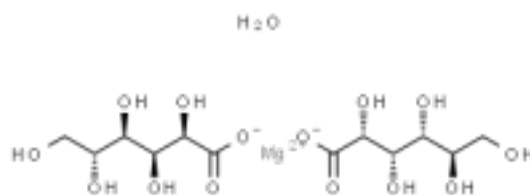
Magnesium D-gluconate hydrate

Code 120050

CAS 3632-91-5

Molar mass 144,13

Formula $C_{12}H_{22}MgO_{14} \cdot xH_2O$



Product Information

Catalogue Number	120050
CAS Number	3632-91-5
EC No	222-848-2
Formula Hill	$C_{12}H_{22}MgO_{14} \cdot xH_2O$
Molar Mass	144,13
HS code	29181600

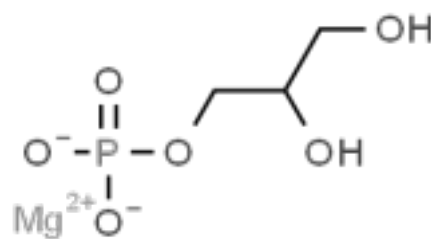
Magnesium glycerophosphate, Ph. Eur.

Code 108040

CAS 927-20-8

Molar mass 194,36

Formula $C_3H_7MgO_6P$



Product Information

Catalogue Number	108040
CAS Number	927-20-8
EC No	213-146-3
Formula Hill	$C_3H_7MgO_6P$
Molar Mass	194,36
HS code	29199000
Classification	Premium

Malt extract

Code 108150

CAS 8002-48-0



Product Information

Catalogue Number	108150
CAS Number	8002-48-0
HS code	19019011
Classification	Superior

Maltodextrin, Ph. Eur.

Code 121931

CAS 9050-36-6

Formula $(C_6H_{10}O_5)_n$



Product Information

Catalogue Number	121931
CAS Number	9050-36-6
EC No	232-940-4
Formula Hill	$(C_6H_{10}O_5)_n$
HS code	3505101000
Classification	Premium

Maltose monohydrate

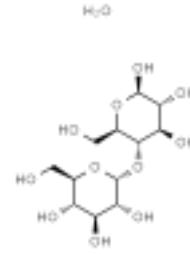
Synonyms: D-(+)-Maltose monohydrate, 4-O- α -D-Glucopyranosyl-D-glucose

Code 108160

CAS 6363-53-7

Molar mass 360,32

Formula $C_{12}H_{22}O_{11} \cdot H_2O$



Product Information

Catalogue Number	108160
CAS Number	6363-53-7
EC No	200-716-5
Formula Hill	$C_{12}H_{22}O_{11} \cdot H_2O$
Molar Mass	360,32
HS code	17029010
Classification	Superior

(* Usually in stock)

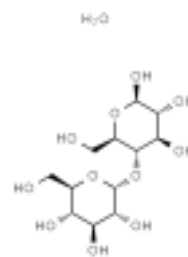
Maltose monohydrate, NF

Code 108161

CAS 6363-53-7

Molar mass 360,32

Formula $C_{12}H_{22}O_{11} \cdot H_2O$



Product Information

Catalogue Number	108161
CAS Number	6363-53-7
EC No	613-294-6
Formula Hill	$C_{12}H_{22}O_{11} \cdot H_2O$
Molar Mass	360,32
HS code	17029010
Classification	Premium

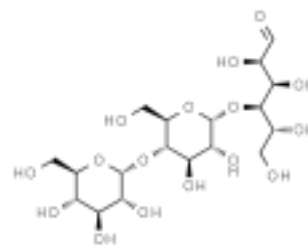
Maltotriose

Code 125780

CAS 1109-28-0

Molar mass 504,44

Formula $C_{18}H_{32}O_{16}$



Product Information

Catalogue Number	125780
CAS Number	1109-28-0
EC No	214-174-2
Formula Hill	$C_{18}H_{32}O_{16}$
Molar Mass	504,44
HS code	2940000080
Classification	Superior

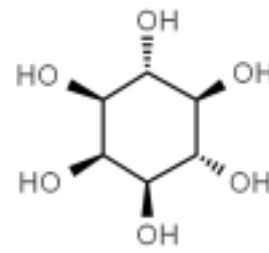
myo-Inositol, NF

Code 107430

CAS 87-89-8

Molar mass 180,16

Formula $C_6H_{12}O_6$



Product Information

Catalogue Number	107430
CAS Number	87-89-8
EC No	201-781-2
Formula Hill	$C_6H_{12}O_6$
Molar Mass	180,16
HS code	29061390
Classification	Premium

(* Usually in stock)

N-Acetyl-D-glucosamine

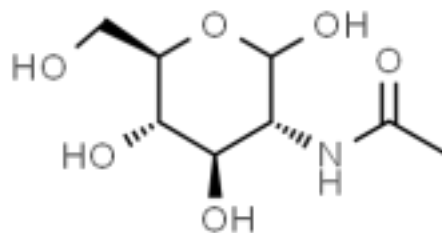
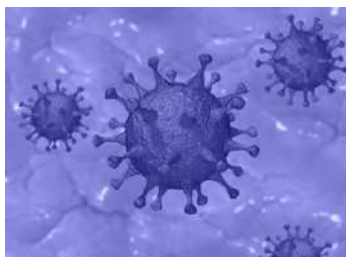
Synonyms: D-GlcNAc, 2-Acetamido-2-deoxy-D-glucose

Code 100140

CAS 7512-17-6

Molar mass 221,21

Formula $C_8H_{15}NO_6$



Product Information

Catalogue Number	100140
CAS Number	7512-17-6
EC No	231-368-2
Formula Hill	$C_8H_{15}NO_6$
Molar Mass	221,21
HS code	29241900
Classification	Premium

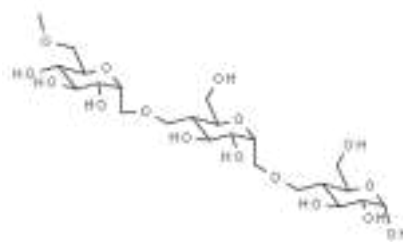
(* Usually in stock)

Pullulan

Code 120951

CAS 9057-02-7

Formula $C_{23}H_{42}O_{16}$



Product Information

Catalogue Number	120951
CAS Number	9057-02-7
EC No	232-945-1
Formula Hill	$C_{23}H_{42}O_{16}$
HS code	3913900099
Classification	Superior

(* Usually in stock)

Salicin

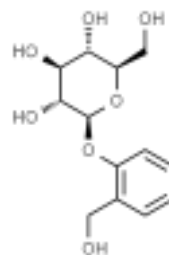
Synonyms: Salicyl alcohol glucoside, 2-(Hydroxymethyl)phenyl- β -D-glucopyranoside, D-(-)Salicin, Salicoside

Code 111270

CAS 138-52-3

Molar mass 286,28


Formula C₁₃H₁₈O₇



Product Information

Catalogue Number	111270
CAS Number	138-52-3
EC No	205-331-6
Formula Hill	C ₁₃ H ₁₈ O ₇
Molar Mass	286,28
HS code	29389090
Classification	Premium

Safety Information

Hazard pictogram	
Hazard statement	H317 - May cause an allergic skin reaction.
Precautionary statement	P102 - Keep out of reach of children. P103 - Read label before use. P261 - Avoid breathing dust/fume/gas/mist/vapours/spray. P272 - Contaminated work clothing should not be allowed out of the workplace. P280 - Wear protective gloves/protective clothing/eye protection/face protection. P333/313 - If skin irritation or rash occurs: Get medical advice/attention. P321 - Specific treatment (see on this label).
Signal Word	WARNING

(* Usually in stock)

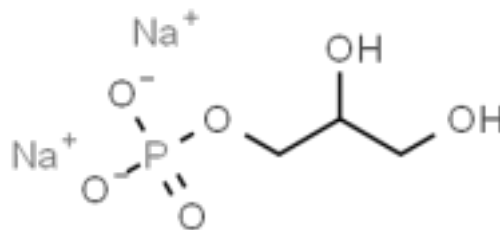
Sodium glycerophosphate

Code 111681

CAS 55073-41-1

Molar mass 216,04

Formula $C_3H_7Na_2O_6P \cdot xH_2O$



Product Information

Catalogue Number	111681
CAS Number	55073-41-1
EC No	215-613-0
Formula Hill	$C_3H_7Na_2O_6P \cdot xH_2O$
Molar Mass	216,04
HS code	29199000
Classification	Superior

(* Usually in stock)

Sodium pyruvate

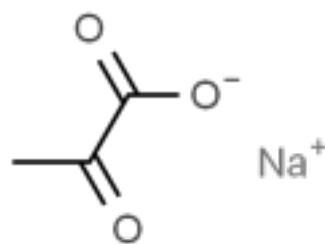
Synonyms: α -Ketopropionic acid sodium salt, Pyruvic acid sodium salt, 2-Oxopropanoic acid sodium salt

Code 111880

CAS 113-24-6

Molar mass 110,05


Formula $C_3H_3NaO_3$



Product Information

Catalogue Number	111880
CAS Number	113-24-6
EC No	204-024-4
Formula Hill	$C_3H_3NaO_3$
Chemical formula	$C_3H_3NaO_3$
Molar Mass	110,05
HS code	29183000
REACH Registration no.	01-2120767047-50-0010
Classification	Premium

Safety Information

Hazard pictogram	
Hazard statement	H317 - May cause an allergic skin reaction. H319 - Causes serious eye irritation.
Precautionary statement	P102 - Keep out of reach of children. P103 - Read label before use. P261 - Avoid breathing dust/fume/gas/mist/vapours/spray. P264 - Wash thoroughly after handling. P272 - Contaminated work clothing should not be allowed out of the workplace. P333/313 - If skin irritation or rash occurs: Get medical advice/attention. P337/313 - If eye irritation persists: Get medical advice/attention.
Signal Word	WARNING

(* Usually in stock)

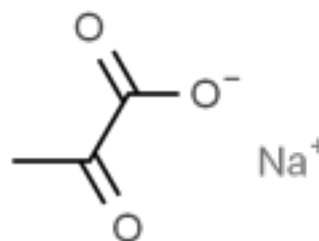
Sodium pyruvate, reag. USP

Code 111881

CAS 113-24-6

Molar mass 110,05


Formula $C_3H_3NaO_3$



Product Information

Catalogue Number	111881
CAS Number	113-24-6
EC No	204-024-4
Formula Hill	$C_3H_3NaO_3$
Molar Mass	110,05
HS code	29183000
REACH Registration no.	01-2120767047-50-0010
Classification	Premium

Safety Information

Hazard pictogram	
Hazard statement	H317 - May cause an allergic skin reaction. H319 - Causes serious eye irritation.
Precautionary statement	P102 - Keep out of reach of children. P103 - Read label before use. P261 - Avoid breathing dust/fume/gas/mist/vapours/spray. P264 - Wash thoroughly after handling. P272 - Contaminated work clothing should not be allowed out of the workplace. P333/313 - If skin irritation or rash occurs: Get medical advice/attention. P337/313 - If eye irritation persists: Get medical advice/attention.
Signal Word	WARNING

(* Usually in stock)

Sorbitol 70%

Code 112090

CAS 50-70-4

Formula



Product Information

Catalogue Number	112090
CAS Number	50-70-4
EC No	200-061-5
HS code	29054491
Classification	Superior

Starch soluble acc. to Zulkowski, for analysis

Synonyms: alpha-Maltose, Amylodextrin

Code 112142

CAS 9005-84-9

Formula $(C_6H_{10}O_5)_n$



Product Information

Catalogue Number	112142
CAS Number	9005-84-9
EC No	232-686-4
Formula Hill	$(C_6H_{10}O_5)_n$
HS code	35051090
Classification	Superior

Starch soluble, ACS, (Reag. Ph. Eur., USP)

Synonyms: Amylodextrin, alpha-Maltose

Code 112141

CAS 9005-84-9

Formula $(C_6H_{10}O_5)_n$



Product Information

Catalogue Number	112141
CAS Number	9005-84-9
EC No	232-686-4
Formula Hill	$(C_6H_{10}O_5)_n$
HS code	35051090
Classification	Superior

(* Usually in stock)

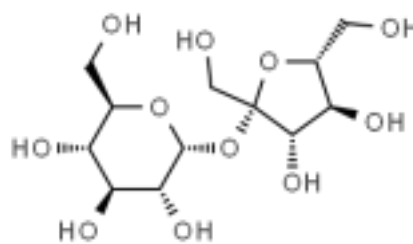
Sucrose, ACS

Code 112190

CAS 57-50-1

Molar mass 342,3

Formula $C_{12}H_{22}O_{11}$



Product Information

Catalogue Number	112190
CAS Number	57-50-1
EC No	200-334-9
Formula Hill	$C_{12}H_{22}O_{11}$
Molar Mass	342,3
HS code	17019910
Classification	Superior

Sucrose, JP, NF, Ph. Eur., low endotoxin

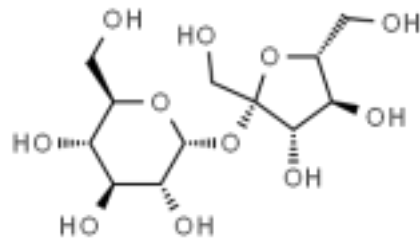
Synonyms: D(+)-Saccharose, β -D-Fructofuranosyl- α -D-glucopyranoside, α -D-Glucopyranosyl β -D-fructofuranoside, Sugar

Code 112192

CAS 57-50-1

Molar mass 342,3

Formula $C_{12}H_{22}O_{11}$



Product Information

Catalogue Number	112192
CAS Number	57-50-1
EC No	200-334-9
Formula Hill	$C_{12}H_{22}O_{11}$
Molar Mass	342,3
HS code	17019910
Classification	Premium

Sucrose, Ph. Eur.

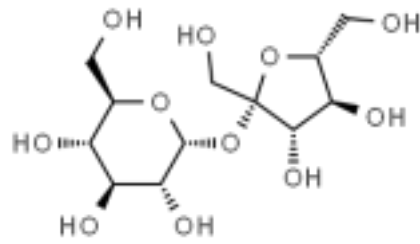
Synonyms: D(+)-Saccharose, β -D-Fructofuranosyl- α -D-glucopyranoside, α -D-Glucopyranosyl β -D-fructofuranoside, Sugar

Code 112191

CAS 57-50-1

Molar mass 342,3

Formula C₁₂H₂₂O₁₁



Product Information

Catalogue Number	112191
CAS Number	57-50-1
EC No	200-334-9
Formula Hill	C ₁₂ H ₂₂ O ₁₁
Molar Mass	342,3
HS code	17019910
Classification	Premium

(* Usually in stock)

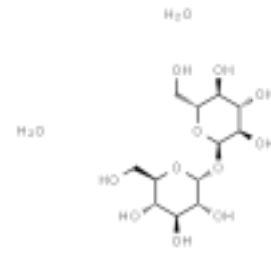
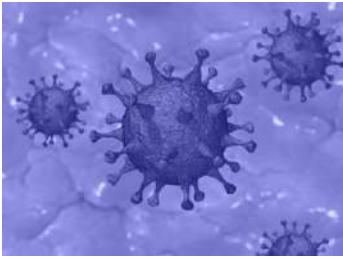
Trehalose dihydrate, FCC

Code 122891

CAS 6138-23-4

Molar mass 378,33

Formula $C_{12}H_{26}O_{13}$



Product Information

Catalogue Number	122891
CAS Number	6138-23-4
EC No	202-739-6
Formula Hill	$C_{12}H_{26}O_{13}$
Molar Mass	378,33
HS code	29400000
Classification	Superior

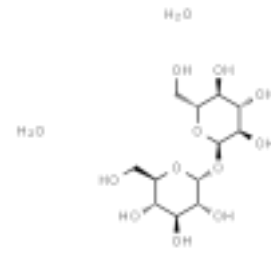
Trehalose dihydrate, Ph. Eur.

Code 122892

CAS 6138-23-4

Molar mass 378,33

Formula $C_{12}H_{26}O_{13}$



Product Information

Catalogue Number	122892
CAS Number	6138-23-4
EC No	202-739-6
Formula Hill	$C_{12}H_{26}O_{13}$
Molar Mass	378,33
HS code	29400000
Classification	Premium

(* Usually in stock)

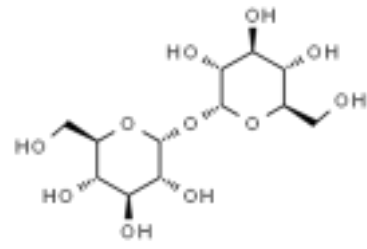
Trehalose USP

Code 112901

CAS 99-20-7

Molar mass 342,29

Formula $C_{12}H_{22}O_{11}$



Product Information

Catalogue Number	112901
CAS Number	99-20-7
EC No	202-739-6
Formula Hill	$C_{12}H_{22}O_{11}$
Molar Mass	342,29
HS code	29400000
Classification	Premium

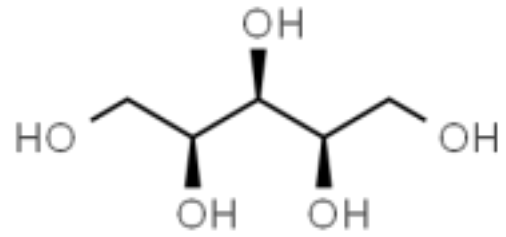
Xylitol, Ph. Eur.

Code 113860

CAS 87-99-0

Molar mass 152,15

Formula $C_5H_{12}O_5$



Product Information

Catalogue Number	113860
CAS Number	87-99-0
EC No	201-788-0
Formula Hill	$C_5H_{12}O_5$
Molar Mass	152,15
HS code	29400000

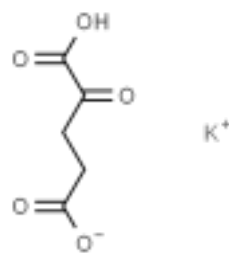
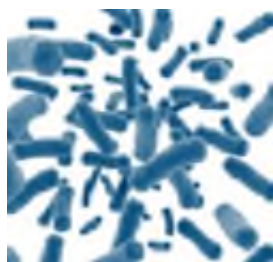
α -Ketoglutaric acid potassium salt

Code 115470

CAS 997-43-3

Molar mass 184,19

Formula $C_5H_5KO_5$



Product Information

Catalogue Number	115470
CAS Number	997-43-3
EC No	213-641-8
Formula Hill	$C_5H_5KO_5$
Molar Mass	184,19
HS code	29183000
Classification	Superior

По вопросам продаж и поддержки обращайтесь:

Алматы (7273)495-231
Ангарск (3955)60-70-56
Архангельск (8182)63-90-72
Астрахань (8512)99-46-04
Барнаул (3852)73-04-60
Белгород (4722)40-23-64
Благовещенск (4162)22-76-07
Брянск (4832)59-03-52
Владивосток (423)249-28-31
Владикавказ (8672)28-90-48
Владимир (4922)49-43-18
Волгоград (844)278-03-48
Вологда (8172)26-41-59
Воронеж (473)204-51-73
Екатеринбург (343)384-55-89

Иваново (4932)77-34-06
Ижевск (3412)26-03-58
Иркутск (395)279-98-46
Казань (843)206-01-48
Калининград (4012)72-03-81
Калуга (4842)92-23-67
Кемерово (3842)65-04-62
Киров (8332)68-02-04
Коломна (4966)23-41-49
Кострома (4942)77-07-48
Краснодар (861)203-40-90
Красноярск (391)204-63-61
Курск (4712)77-13-04
Курган (3522)50-90-47
Липецк (4742)52-20-81

Магнитогорск (3519)55-03-13
Москва (495)268-04-70
Мурманск (8152)59-64-93
Набережные Челны (8552)20-53-41
Нижегород (831)429-08-12
Новокузнецк (3843)20-46-81
Ноябрьск (3496)41-32-12
Новосибирск (383)227-86-73
Омск (3812)21-46-40
Орел (4862)44-53-42
Оренбург (3532)37-68-04
Пенза (8412)22-31-16
Петрозаводск (8142)55-98-37
Псков (8112)59-10-37
Пермь (342)205-81-47

Ростов-на-Дону (863)308-18-15
Рязань (4912)46-61-64
Самара (846)206-03-16
Санкт-Петербург (812)309-46-40
Саратов (845)249-38-78
Севастополь (8692)22-31-93
Саранск (8342)22-96-24
Симферополь (3652)67-13-56
Смоленск (4812)29-41-54
Сочи (862)225-72-31
Ставрополь (8652)20-65-13
Сургут (3462)77-98-35
Сыктывкар (8212)25-95-17
Тамбов (4752)50-40-97
Тверь (4822)63-31-35

Тольятти (8482)63-91-07
Томск (3822)98-41-53
Тула (4872)33-79-87
Тюмень (3452)66-21-18
Ульяновск (8422)24-23-59
Улан-Удэ (3012)59-97-51
Уфа (347)229-48-12
Хабаровск (4212)92-98-04
Чебоксары (8352)28-53-07
Челябинск (351)202-03-61
Череповец (8202)49-02-64
Чита (3022)38-34-83
Якутск (4112)23-90-97
Ярославль (4852)69-52-93

Россия +7(495)268-04-70

Казахстан +7(7172)727-132

Киргизия +996(312)96-26-47

эл.почта: den@nt-rt.ru || сайт: <https://dcfine.nt-rt.ru/>