

# ЕЛЧН Е КИСЛОТ

## Техническите характеристики

По вопросам продаж и поддержки обращайтесь:

Алматы (7273)495-231  
Ангарск (3955)60-70-56  
Архангельск (8182)63-90-72  
Астрахань (8512)99-46-04  
Барнаул (3852)73-04-60  
Белгород (4722)40-23-64  
Благовещенск (4162)22-76-07  
Брянск (4832)59-03-52  
Владивосток (423)249-28-31  
Владикавказ (8672)28-90-48  
Владимир (4922)49-43-18  
Волгоград (844)278-03-48  
Вологда (8172)26-41-59  
Воронеж (473)204-51-73  
Екатеринбург (343)384-55-89

Иваново (4932)77-34-06  
Ижевск (3412)26-03-58  
Иркутск (395)279-98-46  
Казань (843)206-01-48  
Калининград (4012)72-03-81  
Калуга (4842)92-23-67  
Кемерово (3842)65-04-62  
Киров (8332)68-02-04  
Коломна (4966)23-41-49  
Кострома (4942)77-07-48  
Краснодар (861)203-40-90  
Красноярск (391)204-63-61  
Курск (4712)77-13-04  
Курган (3522)50-90-47  
Липецк (4742)52-20-81

Магнитогорск (3519)55-03-13  
Москва (495)268-04-70  
Мурманск (8152)59-64-93  
Набережные Челны (8552)20-53-41  
Новокузнецк (3843)20-46-81  
Ноябрьск (3496)41-32-12  
Новосибирск (383)227-86-73  
Омск (3812)21-46-40  
Орел (4862)44-53-42  
Оренбург (3532)37-68-04  
Пенза (8412)22-31-16  
Петрозаводск (8142)55-98-37  
Псков (8112)59-10-37  
Пермь (342)205-81-47

Ростов-на-Дону (863)308-18-15  
Рязань (4912)46-61-64  
Самара (846)206-03-16  
Санкт-Петербург (812)309-46-40  
Саратов (845)249-38-78  
Севастополь (8692)22-31-93  
Саранск (8342)22-96-24  
Симферополь (3652)67-13-56  
Смоленск (4812)29-41-54  
Сочи (862)225-72-31  
Ставрополь (8652)20-65-13  
Сургут (3462)77-98-35  
Сыктывкар (8212)25-95-17  
Тамбов (4752)50-40-97  
Тверь (4822)63-31-35

Тольятти (8482)63-91-07  
Томск (3822)98-41-53  
Тула (4872)33-79-87  
Тюмень (3452)66-21-18  
Ульяновск (8422)24-23-59  
Улан-Удэ (3012)59-97-51  
Уфа (347)229-48-12  
Хабаровск (4212)92-98-04  
Чебоксары (8352)28-53-07  
Челябинск (351)202-03-61  
Череповец (8202)49-02-64  
Чита (3022)38-34-83  
Якутск (4112)23-90-97  
Ярославль (4852)69-52-93

Россия +7(495)268-04-70

Казахстан +7(7172)727-132

Киргизия +996(312)96-26-47

эл.почта: [den@nt-rt.ru](mailto:den@nt-rt.ru) || сайт: <https://dcfine.nt-rt.ru/>

# Bile salts n° 3

Code 101611


CAS



## Product Information

Catalogue Number	101611
HS code	29181930
Classification	Superior

## Safety Information

Hazard pictogram	
Hazard statement	H302 - Harmful if swallowed. H315 - Causes skin irritation. H319 - Causes serious eye irritation.
Precautionary statement	P102 - Keep out of reach of children. P103 - Read label before use. P264 - Wash thoroughly after handling. P270 - Do not eat, drink or smoke when using this product. P280 - Wear protective gloves/protective clothing/eye protection/face protection. P301/310 - IF SWALLOWED: Immediately call a POISON CENTER/doctor. P332/313 - If skin irritation occurs: Get medical advice/attention.
Signal Word	WARNING

(\* Usually in stock)

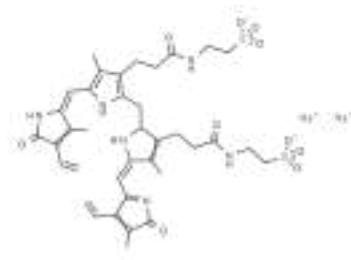
# Bilirubin conjugate

Code 121890

CAS 68683-34-1

Molar mass 842,89

Formula  $C_{37}H_{44}N_6Na_2O_{10}S_2$



## Product Information

Catalogue Number	121890
CAS Number	68683-34-1
EC No	272-072-3
Formula Hill	$C_{37}H_{44}N_6Na_2O_{10}S_2$
Molar Mass	842,89
HS code	29337900
Classification	Standard

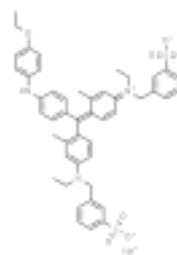
# Brilliant blue G (C.I. 42655)

Code 122430

CAS 6104-58-1

Molar mass 854,04

Formula  $C_{47}H_{48}N_3NaO_7S_2$



## Product Information

Catalogue Number	122430
CAS Number	6104-58-1
EC No	228-058-4
Formula Hill	$C_{47}H_{48}N_3NaO_7S_2$
Molar Mass	854,04
HS code	32041200
Classification	Superior

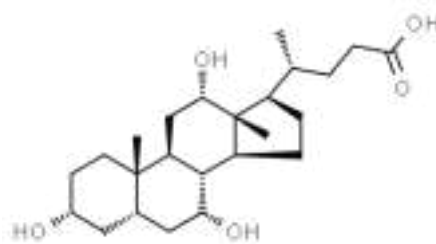
# Cholic acid

Code 103770

CAS 81-25-4

Molar mass 408,57

Formula  $C_{24}H_{40}O_5$



## Product Information

Catalogue Number	103770
CAS Number	81-25-4
EC No	201-337-8
Formula Hill	$C_{24}H_{40}O_5$
Molar Mass	408,57
HS code	2918190018
Classification	Superior

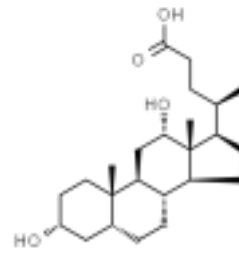
# Deoxycholic acid

Code 104440

CAS 83-44-3

Molar mass 392,57

Formula C<sub>24</sub>H<sub>40</sub>O<sub>4</sub>



## Product Information

Catalogue Number	104440
CAS Number	83-44-3
EC No	201-478-5
Formula Hill	C <sub>24</sub> H <sub>40</sub> O <sub>4</sub>
Molar Mass	392,57
HS code	29181930
Classification	Superior

## Safety Information

Hazard pictogram	
Hazard statement	H302 - Harmful if swallowed. H315 - Causes skin irritation. H319 - Causes serious eye irritation. H335 - May cause respiratory irritation.
Precautionary statement	P102 - Keep out of reach of children. P103 - Read label before use. P261 - Avoid breathing dust/fume/gas/mist/vapours/spray. P264 - Wash thoroughly after handling. P310 - Immediately call a POISON CENTER/doctor. P321 - Specific treatment (see on this label). P403/233 - Store in a well-ventilated place. Keep container tightly closed.
Signal Word	WARNING

# Ox bile bacteriological

Code 109771

CAS 8008-63-7

Formula



## Product Information

Catalogue Number	109771
CAS Number	8008-63-7
EC No	232-369-0
HS code	05100000
Classification	Standard

## Safety Information

Hazard pictogram	
Hazard statement	H315 - Causes skin irritation. H319 - Causes serious eye irritation.
Precautionary statement	P102 - Keep out of reach of children. P103 - Read label before use. P264 - Wash thoroughly after handling. P280 - Wear protective gloves/protective clothing/eye protection/face protection. P332/313 - If skin irritation occurs: Get medical advice/attention. P337/313 - If eye irritation persists: Get medical advice/attention. P321 - Specific treatment (see on this label).
Signal Word	WARNING

# Ox bile, powder

Code 109770

CAS 8008-63-7

Formula



## Product Information

Catalogue Number	109770
CAS Number	8008-63-7
EC No	232-369-0
HS code	05100000
Classification	Superior

## Safety Information

Hazard pictogram	
Hazard statement	H315 - Causes skin irritation. H319 - Causes serious eye irritation.
Precautionary statement	P102 - Keep out of reach of children. P103 - Read label before use. P264 - Wash thoroughly after handling. P280 - Wear protective gloves/protective clothing/eye protection/face protection. P332/313 - If skin irritation occurs: Get medical advice/attention. P337/313 - If eye irritation persists: Get medical advice/attention. P321 - Specific treatment (see on this label).
Signal Word	WARNING

# Sodium cholate

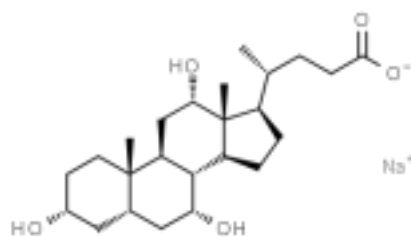
Synonyms: Cholalic acid, sodium salt, 3 $\alpha$ ,7 $\alpha$ ,12 $\alpha$ -Trihydroxy-5 $\beta$ -cholan-24-oic acid sodium salt

Code 111590

CAS 361-09-1

Molar mass 430,55

Formula C<sub>24</sub>H<sub>39</sub>NaO<sub>5</sub>



## Product Information

Catalogue Number	111590
CAS Number	361-09-1
EC No	206-643-5
Formula Hill	C <sub>24</sub> H <sub>39</sub> NaO <sub>5</sub>
Molar Mass	430,55
HS code	29181930
REACH Registration no.	01-2120768605-45-0003
Classification	Superior

## Safety Information

Hazard pictogram	
Hazard statement	H315 - Causes skin irritation. H319 - Causes serious eye irritation.
Precautionary statement	P102 - Keep out of reach of children. P103 - Read label before use. P264 - Wash thoroughly after handling. P280 - Wear protective gloves/protective clothing/eye protection/face protection. P332/313 - If skin irritation occurs: Get medical advice/attention. P337/313 - If eye irritation persists: Get medical advice/attention. P321 - Specific treatment (see on this label).
Signal Word	WARNING

(\* Usually in stock)

# Sodium deoxycholate

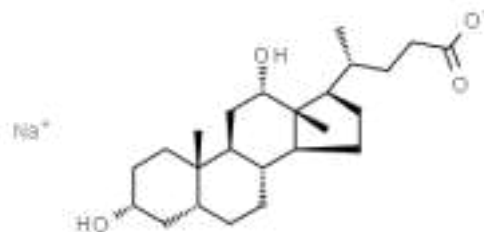
**Synonyms:** 3 $\alpha$ ,12 $\alpha$ -Dihydroxy-5 $\beta$ -cholanic acid sodium salt, 7-Deoxycholic acid sodium salt, Desoxycholic acid sodium salt

Code 111630

CAS 302-95-4

Molar mass 414,57

Formula C<sub>24</sub>H<sub>39</sub>NaO<sub>4</sub>



## Product Information

Catalogue Number	111630
CAS Number	302-95-4
EC No	206-132-7
Formula Hill	C <sub>24</sub> H <sub>39</sub> NaO <sub>4</sub>
Chemical formula	C <sub>24</sub> H <sub>39</sub> NaO <sub>4</sub>
Molar Mass	414,57
HS code	29181930
REACH Registration no.	01-2120768604-47-0004
Classification	Superior

## Safety Information

Hazard pictogram	
Hazard statement	H302 - Harmful if swallowed. H315 - Causes skin irritation. H319 - Causes serious eye irritation.
Precautionary statement	P102 - Keep out of reach of children. P103 - Read label before use. P264 - Wash thoroughly after handling. P270 - Do not eat, drink or smoke when using this product. P280 - Wear protective gloves/protective clothing/eye protection/face protection. P301/310 - IF SWALLOWED: Immediately call a POISON CENTER/doctor. P332/313 - If skin irritation occurs: Get medical advice/attention.
Signal Word	WARNING

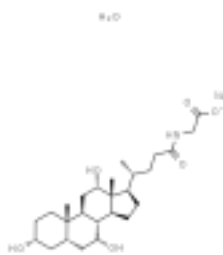
(\* Usually in stock)

# Sodium glycocholate hydrate

Code 111690

CAS 863-57-0

Formula  $C_{26}H_{42}NO_6Na \cdot xH_2O$



## Product Information

Catalogue Number	111690
CAS Number	863-57-0
EC No	212-730-9
Formula Hill	$C_{26}H_{42}NO_6Na \cdot xH_2O$
Molar Mass (anhydrous basis)	487,6
Classification	Superior

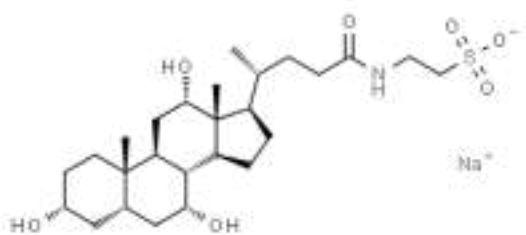
# Sodium taurocholate

Code 111970

CAS 145-42-6

Molar mass 537,68

Formula  $C_{26}H_{44}NO_7S \cdot Na$



## Product Information

Catalogue Number	111970
CAS Number	145-42-6
EC No	205-653-7
Formula Hill	$C_{26}H_{44}NO_7S \cdot Na$
Molar Mass	537,68
HS code	29242970
Classification	Superior

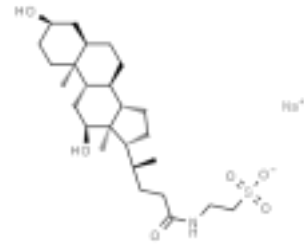
# Sodium taurodeoxycholate

Code 111980

CAS 1180-95-6; 110026-03-4

Molar mass 521,69

Formula  $C_{26}H_{44}NNaO_6S$



## Product Information

Catalogue Number	111980
CAS Number	1180-95-6; 110026-03-4
EC No	205-653-7
Formula Hill	$C_{26}H_{44}NNaO_6S$
Molar Mass	521,69
HS code	29181998
Classification	Superior

# Special bile

Code 112120

CAS 8008-63-7



## Product Information

Catalogue Number	112120
CAS Number	8008-63-7
EC No	232-369-0
HS code	30012090
Classification	Superior

## Safety Information

Hazard pictogram	
Hazard statement	H315 - Causes skin irritation. H319 - Causes serious eye irritation.
Precautionary statement	P102 - Keep out of reach of children. P103 - Read label before use. P264 - Wash thoroughly after handling. P280 - Wear protective gloves/protective clothing/eye protection/face protection. P332/313 - If skin irritation occurs: Get medical advice/attention. P337/313 - If eye irritation persists: Get medical advice/attention. P321 - Specific treatment (see on this label).
Signal Word	WARNING

(\* Usually in stock)

## По вопросам продаж и поддержки обращайтесь:

Алматы (7273)495-231  
Ангарск (3955)60-70-56  
Архангельск (8182)63-90-72  
Астрахань (8512)99-46-04  
Барнаул (3852)73-04-60  
Белгород (4722)40-23-64  
Благовещенск (4162)22-76-07  
Брянск (4832)59-03-52  
Владивосток (423)249-28-31  
Владикавказ (8672)28-90-48  
Владимир (4922)49-43-18  
Волгоград (844)278-03-48  
Вологда (8172)26-41-59  
Воронеж (473)204-51-73  
Екатеринбург (343)384-55-89

Иваново (4932)77-34-06  
Ижевск (3412)26-03-58  
Иркутск (395)279-98-46  
Казань (843)206-01-48  
Калининград (4012)72-03-81  
Калуга (4842)92-23-67  
Кемерово (3842)65-04-62  
Киров (8332)68-02-04  
Коломна (4966)23-41-49  
Кострома (4942)77-07-48  
Краснодар (861)203-40-90  
Красноярск (391)204-63-61  
Курск (4712)77-13-04  
Курган (3522)50-90-47  
Липецк (4742)52-20-81

Магнитогорск (3519)55-03-13  
Москва (495)268-04-70  
Мурманск (8152)59-64-93  
Набережные Челны (8552)20-53-41  
Нижегород (831)429-08-12  
Новокузнецк (3843)20-46-81  
Ноябрьск (3496)41-32-12  
Новосибирск (383)227-86-73  
Омск (3812)21-46-40  
Орел (4862)44-53-42  
Оренбург (3532)37-68-04  
Пенза (8412)22-31-16  
Петрозаводск (8142)55-98-37  
Псков (8112)59-10-37  
Пермь (342)205-81-47

Ростов-на-Дону (863)308-18-15  
Рязань (4912)46-61-64  
Самара (846)206-03-16  
Санкт-Петербург (812)309-46-40  
Саратов (845)249-38-78  
Севастополь (8692)22-31-93  
Саранск (8342)22-96-24  
Симферополь (3652)67-13-56  
Смоленск (4812)29-41-54  
Сочи (862)225-72-31  
Ставрополь (8652)20-65-13  
Сургут (3462)77-98-35  
Сыктывкар (8212)25-95-17  
Тамбов (4752)50-40-97  
Тверь (4822)63-31-35

Тольятти (8482)63-91-07  
Томск (3822)98-41-53  
Тула (4872)33-79-87  
Тюмень (3452)66-21-18  
Ульяновск (8422)24-23-59  
Улан-Удэ (3012)59-97-51  
Уфа (347)229-48-12  
Хабаровск (4212)92-98-04  
Чебоксары (8352)28-53-07  
Челябинск (351)202-03-61  
Череповец (8202)49-02-64  
Чита (3022)38-34-83  
Якутск (4112)23-90-97  
Ярославль (4852)69-52-93

Россия +7(495)268-04-70

Казахстан +7(7172)727-132

Киргизия +996(312)96-26-47

эл.почта: [den@nt-rt.ru](mailto:den@nt-rt.ru) || сайт: <https://dcfine.nt-rt.ru/>