

Продукция для фармацевтики DC Fine Chemicals

По вопросам продаж и поддержки обращайтесь:

Алматы (7273)495-231
Ангарск (3955)60-70-56
Архангельск (8182)63-90-72
Астрахань (8512)99-46-04
Барнаул (3852)73-04-60
Белгород (4722)40-23-64
Благовещенск (4162)22-76-07
Брянск (4832)59-03-52
Владивосток (423)249-28-31
Владикавказ (8672)28-90-48
Владимир (4922)49-43-18
Волгоград (844)278-03-48
Вологда (8172)26-41-59
Воронеж (473)204-51-73
Екатеринбург (343)384-55-89

Иваново (4932)77-34-06
Ижевск (3412)26-03-58
Иркутск (395)279-98-46
Казань (843)206-01-48
Калининград (4012)72-03-81
Калуга (4842)92-23-67
Кемерово (3842)65-04-62
Киров (8332)68-02-04
Коломна (4966)23-41-49
Кострома (4942)77-07-48
Краснодар (861)203-40-90
Красноярск (391)204-63-61
Курск (4712)77-13-04
Курган (3522)50-90-47
Липецк (4742)52-20-81

Магнитогорск (3519)55-03-13
Москва (495)268-04-70
Мурманск (8152)59-64-93
Набережные Челны (8552)20-53-41
Нижегород (831)429-08-12
Новокузнецк (3843)20-46-81
Ноябрьск (3496)41-32-12
Новосибирск (383)227-86-73
Омск (3812)21-46-40
Орел (4862)44-53-42
Оренбург (3532)37-68-04
Пенза (8412)22-31-16
Петрозаводск (8142)55-98-37
Псков (8112)59-10-37
Пермь (342)205-81-47

Ростов-на-Дону (863)308-18-15
Рязань (4912)46-61-64
Самара (846)206-03-16
Санкт-Петербург (812)309-46-40
Саратов (845)249-38-78
Севастополь (8692)22-31-93
Саранск (8342)22-96-24
Симферополь (3652)67-13-56
Смоленск (4812)29-41-54
Сочи (862)225-72-31
Ставрополь (8652)20-65-13
Сургут (3462)77-98-35
Сыктывкар (8212)25-95-17
Тамбов (4752)50-40-97
Тверь (4822)63-31-35

Тольятти (8482)63-91-07
Томск (3822)98-41-53
Тула (4872)33-79-87
Тюмень (3452)66-21-18
Ульяновск (8422)24-23-59
Улан-Удэ (3012)59-97-51
Уфа (347)229-48-12
Хабаровск (4212)92-98-04
Чебоксары (8352)28-53-07
Челябинск (351)202-03-61
Череповец (8202)49-02-64
Чита (3022)38-34-83
Якутск (4112)23-90-97
Ярославль (4852)69-52-93

Россия +7(495)268-04-70

Казахстан +7(7172)727-132

Киргизия +996(312)96-26-47

эл.почта: den@nt-rt.ru || сайт: <https://dcfine.nt-rt.ru/>



● MISSION

To supply high quality fine chemical products for science and the chemical industry.

● VISION

To contribute to scientific knowledge and progress through the supply of our products and services.

● VALUES

BONDS

We foster close relationships with our staff and business partners to provide a personal service.

OPTIMISATION

We prioritise quality and excellence through innovation as a key driver for development.

KNOWLEDGE

Our extensive scientific knowledge and experience are the cornerstone of our business.

● SUSTAINABILITY

We are firmly committed to the protection of the environment and the prevention of pollution. We exceed the necessary legal requirements with the implementation of three further policies:

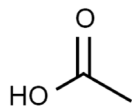
Waste management and recycling

Reduction in the use of resources and energy

Continuous improvement of our environmental impact systems (ISO14001)



DESCRIPTION	CAS	PAGE
Acetic acid (glacial) 100%, Ph. Eur., USP	64-19-7	06
L-Alanine, Ph. Eur.	56-41-7	06
L-Arginine monohydrochloride, Ph. Eur., JP, USP	1119-34-2	06
L-Aspartic acid, Ph. Eur.	56-84-8	07
D(+)-Biotin, Ph. Eur., USP	58-85-5	07
Chloral hydrate, Ph. Eur., USP	320-17-0	07
Chloramphenicol, BP, Ph. Eur.	56-75-7	08
L-Cystine, Ph. Eur.	56-89-3	08
Dextran 40.000, Ph. Eur.	9004-54-0	08
Ethylenediaminetetraacetic acid disodium salt dihydrate, Ph. Eur.	6381-92-6	09
L-Glutamine, USP	56-85-9	09
Glycine, Ph. Eur.	56-40-6	09
L-Histidine, Ph. Eur.	71-00-1	10
L-Histidine monohydrochloride monohydrate, Ph. Eur.	5934-29-2	10
Hydroquinone, USP	123-31-9	10
Iodine sublimated crystals, Ph. Eur., USP	7553-56-2	11
Lactose monohydrate, Ph. Eur.	10039-26-6	11
L-Lysine monohydrochloride, USP	657-27-2	11
D(-)-Mannitol, Ph. Eur.	69-65-8	12
Phenolphthalein, Ph. Eur.	77-09-8	12
Potassium bromide, USP	7758-02-3	12



Acetic acid (glacial) 100%, Ph. Eur., USP

Glacial acetic acid

115620

CAS

64-19-7

Molar mass

60,05 g/mol

Formula Hill

C₂H₄O₂

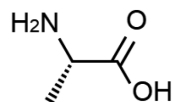
EC Number

200-580-7

Specification

Assay (acidometric)	99,5 - 100,5 %	Freezing point	≥ 15,6 °C	Sulfate (SO ₄)	≤ 0,0050 %
Identity (Ph. Eur.)	conforms	Solubility	conforms	Fe (Iron)	≤ 5 ppm
Identity (USP)	conforms	Chloride (Cl)	conforms	Oxidizable substances	conforms
Appearance	mass or volatile liquid	Chloride (Cl)	≤ 0,0025 %	Reducing substances	conforms
Colour	cryst. or clear colour	Sulfate (SO ₄)	conforms	Residue on evaporation	≤ 0,01 %

Conforms to Ph. Eur., USP specification



L-Alanine, Ph. Eur.

(S)-2-Aminopropionic acid / L-α-Aminopropionic acid

100320

CAS

56-41-7

Molar mass

89,09 g/mol

Formula Hill

C₃H₇NO₂

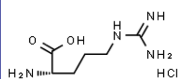
EC Number

200-273-8

Specification

Assay (dried subs.)	98,5 - 101,0 %	Sulfate (SO ₄)	≤ 0,03 %	Ninhydrin-positive subst.	conforms
Identity	conforms	NH ₄ (Ammonium)	≤ 0,02 %	Heavy metals (as Pb)	≤ 0,0010 %
Specific rotation	13,5 - 15,5 °	Fe (Iron)	≤ 0,0010 %	Loss on drying	≤ 0,5 %
Chloride (Cl)	≤ 0,02 %	Ash	≤ 0,1 %		

Conforms to Ph. Eur. specification



L-Arginine monohydrochloride, Ph. Eur., JP, USP

(S)-(+)-Arginine hydrochloride

101251

CAS

1119-34-2

Molar mass

210,66 g/mol

Formula Hill

C₆H₁₄N₄O₂ · HCl

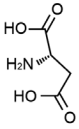
EC Number

214-275-1

Specification

Assay	98,5 - 101,0 %	Specific rotation	21,5 - 23,5	Fe (Iron)	≤ 0,0010 %
Identity (Ph. Eur, JP, USP)	conforms	Chloride (Cl)	16,5 - 17,1 %	Ninhydrin-positive subst.	conforms
Appearance	white cryst. or powder	Sulfate (SO ₄)	≤ 0,0200 %	Related subst. (JP, USP)	conforms
Appearance of solution	conforms	NH ₄ (Ammonium)	≤ 0,02 %	Residual solvents	conforms
pH value (10%)	4,7 - 6,2	Heavy metals (as Pb)	≤ 0,0010 %	Ash	≤ 0,1 %
Solubility	conforms	As (Arsenic)	≤ 2 ppm	Loss on drying	≤ 0,2 %

Conforms to Ph. Eur., JP, USP specification



L-Aspartic acid, Ph. Eur.
(S)-Aminobutanedioic acid / (S)-(+)-Aminosuccinic acid

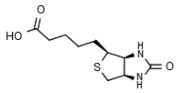
101311

CAS	Molar mass	Formula Hill	EC Number
56-84-8	133,10 g/mol	C ₄ H ₇ NO ₄	200-291-6

Specification

Assay (dried subs.)	98,5 - 101,5 %	Solubility	conforms	Heavy metals (as Pb)	≤ 0,0010 %
Identity	conforms	Specific rotation	24,0 - 26,0 °	Fe (Iron)	≤ 0,0010 %
Appearance	powder or crystals	Chloride (Cl)	≤ 0,0200 %	Ninhydrin-positive subst.	≤ 0,5%
Colour	white or almost white	Sulfate (SO ₄)	≤ 0,0300 %	Loss on drying	≤ 0,5%
Appearance of solution	conforms	NH ₄ (Ammonium)	≤ 0,02 %	Sulfated ash	≤ 0,1%

Conforms to Ph. Eur. specification



D(+)-Biotin, Ph. Eur., USP
Vitamin H

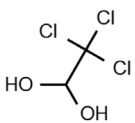
114190

CAS	Molar mass	Formula Hill	EC Number
58-85-5	244,31 g/mol	C ₁₀ H ₁₆ N ₂ O ₃ S	200-399-3

Specification

Assay (dried subs.)	98,5 - 100,5 %	Appearance of solution	conforms	Heavy metals (as Pb)	≤ 0,0010 %
Identity (Ph. Eur.)	conforms	Specific rotation	89,0 - 93,0 °	Loss on drying (105°C)	≤ 1,0 %
Identity (USP)	conforms	Related substances	conforms	Organic volatile imp.	conforms
Appearance	white crystalline powder	Sulfated ash	≤ 0,10 %		

Conforms to Ph. Eur., USP specification



Chloral hydrate, Ph. Eur., USP
Trichloroacetaldehyde hydrate

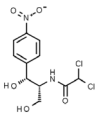
123170

CAS	Molar mass	Formula Hill	EC Number
320-17-0	165,40 g/mol	C ₂ H ₃ Cl ₃ O ₂	206-117-5

Specification

Assay (acidometric)	99,5 - 101,0 %	Acidic substances	conforms	Heavy metals (as Pb)	≤ 0,0020 %
Identity (Ph. Eur.)	conforms	pH value (10%)	3,5 - 5,5	Choral alcoholate	conforms
Identity (USP)	conforms	Solubility	conforms	Readily carbon. subst.	conforms
Appearance	col. transparent crystals	Chloride (Cl)	≤ 0,007 %	Residue after ignition	≤ 0,1 %
Appearance of solution	conforms	Non-volatile matter	≤ 0,1 %		

Conforms to Ph. Eur., USP specification



Chloramphenicol, BP, Ph. Eur. Chloromycetin I

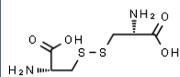
103280

CAS	Molar mass	Formula Hill	EC Number
56-75-7	323,13 g/mol	C ₁₁ H ₁₂ Cl ₂ N ₂ O ₅	200-287-4

Specification

Assay (HPLC)	97,5 - 102,0 %	Acidity or alkalinity	conforms	Chloride (Cl)	≤ 0,0100 %
Identity	conforms	Melting range	149 - 153 °C	Related substances	conforms
Appearance	crys. powder or needles	Solubility	conforms	Loss on drying (105 °C)	≤ 0,5 %
Colour	white to off-white	Specific rotation	18,5 - 20,5 °	Sulfated ash	≤ 0,1 %

Conforms to BP, Ph. Eur. specification



L-Cystine, Ph. Eur. 3,3'-Disulfanediybis[(2R)-2-aminopropanoic acid]

104371

CAS	Molar mass	Formula Hill	EC Number
56-89-3	240,30 g/mol	C ₆ H ₁₂ N ₂ O ₄ S ₂	200-296-3

Specification

Assay (titration)	98,5 - 101,0 %	Specific rotation	-224,0 - -218,0 °	Fe (Iron)	≤ 0,0010 %
Identity	conforms	Chloride (Cl)	≤ 0,0200 %	Pb (Lead)	≤ 5 ppm
Appearance	crystalline powder	Sulfate (SO ₄)	≤ 0,0300 %	Related substances	conforms
Colour	white or almost white	NH ₄ (Ammonium)	≤ 0,02 %	Loss on drying (105°C)	≤ 0,5 %
Appearance of solution	conforms	Heavy metals (as Pb)	≤ 0,0010 %	Sulfated ash	≤ 0,1 %
Solubility	conforms	As (Arsenic)	≤ 1 ppm		

Conforms to Ph. Eur. specification

Dextran 40.000, Ph. Eur.

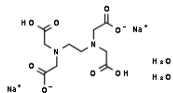
104482

CAS	Molar mass	Formula Hill	EC Number
9004-54-0	40.000 g/mol	(C ₆ H ₁₀ O ₅) _n	232-677-5

Specification

Identity	conforms	Average molecular mass	35.000 - 45.000	Sulfated ash	≤ 0,3 %
Appearance	powder	Nitrogen containing sub.	≤ 0,0110 %	Total aerobic count	≤ 100 cfu/g
Colour	white or almost white	Heavy metals (as Pb)	≤ 0,0010 %	E. coli in 1g	negative
Appearance of solution	conforms	Residual solvents	conforms	Bacterial endotoxins	≤ 10 IU/g
Av. mo. mass 10% high fr.	≤ 110.000	Loss on drying (105°C)	≤ 7,0 %		
Av. mo. mass 10% low fr.	≥ 7.000				

Conforms to Ph. Eur. specification



Ethylenediaminetetraacetic acid disodium salt dihydrate, Ph. Eur.

EDTA disodium salt / Edathamil

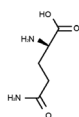
105901

CAS	Molar mass	Formula Hill	EC Number
6381-92-6	372,24 g/mol	$C_{10}H_{14}N_2Na_2O_8 \cdot 2H_2O$	205-358-3

Specification

Assay (dried subs.)	99,0 - 101,0 %	pH value (1%)	4,3 - 4,7	Heavy metals (as Pb)	≤ 0,0020 %
Identity	conforms	pH value (5%)	4,0 - 5,5	Ca (Calcium)	conforms
Appearance	white crystalline powder	Solubility	conforms	Fe (Iron)	≤ 0,0080 %
Appearance of solution	conforms	Nitriloacetic acid (HPLC)	≤ 0,1 %	Pb (Lead)	≤ 0,0010 %
Insoluble matter	≤ 0,005 %				

Conforms to Ph. Eur. specification



L-Glutamine, USP

2-Aminoglutaramic acid

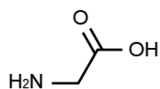
106530

CAS	Molar mass	Formula Hill	EC Number
56-85-9	146,14 g/mol	$C_5H_{10}N_2O_3$	200-292-1

Specification

Assay	98,5 - 101,5 %	Chloride (Cl)	≤ 0,05 %	Ninhydrin-positive subst.	≤ 0,5 %
Identity (IR)	conforms	Sulfate (SO ₄)	≤ 0,03 %	Loss on drying	≤ 0,3 %
Appearance	crystals or powder	Heavy metals (as Pb)	≤ 0,0015 %	Residue after ignition	≤ 0,3 %
Specific rotation	6,3 - 7,3 °	Fe (Iron)	≤ 0,0030 %		

Conforms to USP specification



Glycine, Ph. Eur.

Aminoacetic acid

106570

CAS	Molar mass	Formula Hill	EC Number
56-40-6	75,06 g/mol	$C_2H_5NO_2$	200-272-2

Specification

Assay (dried subs.)	98,5 - 101,0 %	Appearance of solution	conforms	Heavy metals (as Pb)	≤ 0,0010 %
Identity	conforms	pH value	5,9 - 6,4	Ninhydrin-positive subst.	≤ 0,5 %
Appearance	crystalline powder	Solubility	conforms	Loss on drying (105°C)	≤ 0,5 %
Colour	white or almost white	Chloride (Cl)	≤ 0,0075 %	Sulfated ash	≤ 0,1 %

Conforms to Ph. Eur. specification

L-Histidine, Ph. Eur.
(S)-2-Amino-3-(4-imidazolyl)propionic acid

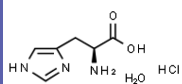
106900

CAS	Molar mass	Formula Hill	EC Number
71-00-1	155,15 g/mol	C ₆ H ₉ N ₃ O ₂	200-745-3

Specification

Assay (dried subs.)	99,0 - 101,0 %	Specific rotation	11,4 - 12,4 °	Fe (Iron)	≤ 0,0010 %
Identity	conforms	Chloride (Cl)	≤ 0,0200 %	Ninhydrin-positive subst.	conforms
Appearance	white crystalline powder	Sulfate (SO ₄)	≤ 0,0300 %	Loss on drying	≤ 0,50 %
Appearance of solution	conforms	NH ₄ (Ammonium)	≤ 0,020 %	Sulfated ash	≤ 0,1 %
pH value	7,0 - 8,5	Heavy metals (as Pb)	≤ 0,0010 %		

Conforms to Ph. Eur. specification



L-Histidine monohydrochloride monohydrate, Ph. Eur.
(2S)-2-Amino-3-(1H-imidazol-4-yl)propanoic acid hydrochloride monohydrate

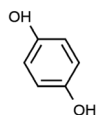
106911

CAS	Molar mass	Formula Hill	EC Number
5934-29-2	209,60 g/mol	C ₆ H ₉ N ₃ O ₂ · ClH · H ₂ O	211-438-9

Specification

Assay	98,5 - 101,0 %	Solubility	conforms	Heavy metals (as Pb)	≤ 0,0010 %
Identity	conforms	pH value (5%)	3,0 - 5,0	Fe (Iron)	≤ 0,0010 %
Appearance	powder or crystals	Specific rotation	9,2 - 10,6 °	Ninhydrin-positive subst.	≤ 0,5 %
Colour	white or almost white	Sulfate (SO ₄)	≤ 0,0300 %	Ash	≤ 0,1 %
Appearance of solution	conforms	NH ₄ (Ammonium)	≤ 0,02 %	Loss on drying (150°C)	7,0 - 10,0 %

Conforms to Ph. Eur. specification



Hydroquinone, USP
1,4-Benzenediol / 1,4-Dihydroxybenzene

107001

CAS	Molar mass	Formula Hill	EC Number
123-31-9	110,11 g/mol	C ₆ H ₆ O ₂	204-617-8

Specification

Assay (dried subs.)	99,0 - 100,5 %	Melting range	172 - 174 °C	Water	≤ 0,5 %
Identity	conforms	Residue after ignition	≤ 0,5 %		

Conforms to USP. specification

Iodine sublimated crystals, Ph. Eur., USP

107451

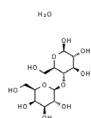
Iodine

CAS	Molar mass	Formula Hill	EC Number
7553-56-2	253,81 g/mol	I ₂	231-442-4

Specification

Assay	99,8 - 100,5 %	Appearance	cryst. with metal sheen	Chloride & Bromide	≤ 0,0250 %
Identity (Ph. Eur.)	conforms	Colour	greyish violet	Non-volatile matter	≤ 0,05 %
Identity (USP)	conforms	Solubility	conforms		

Conforms to Ph. Eur., USP specification

Lactose monohydrate, Ph. Eur.
Milk sugar / 4-O-b-D-Galactopyranosyl-D-glucose

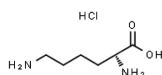
107790

CAS	Molar mass	Formula Hill	EC Number
10039-26-6	360,32 g/mol	C ₁₂ H ₂₂ O ₁₁ · H ₂ O	200-559-2

Specification

Identity	conforms	Heavy metals (as Pb)	≤ 5 ppm	Particle size	
Appearance of solution	conforms	Absorbance	conforms	- through 200 mesh	18 -30 %
Acidity or alkalinity	conforms	Sulfated ash	≤ 0,10 %	Microbial limits	conforms
Specific rotation	54,4 - 55,9 °	Water content (KF)	4,50 - 5,50 %		

Conforms to Ph. Eur. specification

L-Lysine monohydrochloride, USP
(S)-2,6-Diaminohexanoic acid monohydrochloride

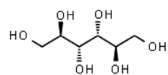
108000

CAS	Molar mass	Formula Hill	EC Number
657-27-2	182,65 g/mol	C ₆ H ₁₅ ClN ₂ O ₂	211-519-9

Specification

Assay	98,5 - 101,5 %	Chloride (Cl)	19,0 - 19,6 %	Ninhydrin-positive subst.	≤ 0,5 %
Identity (IR)	conforms	Sulfate (SO ₄)	≤ 0,03 %	Loss on drying (105°C)	≤ 0,40 %
Appearance	white crystalline powder	Heavy metals (as Pb)	≤ 0,0015 %	Sulfated ash	≤ 0,1 %
Specific rotation	20,4 - 21,4 °	Fe (Iron)	≤ 0,003 %		

Conforms to USP specification



D(-)-Mannitol, Ph. Eur.

Mannite

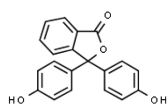
108182

CAS	Molar mass	Formula Hill	EC Number
69-65-8	182,17 g/mol	C ₆ H ₁₄ O ₆	200-711-8

Specification

Assay (dried subs.)	97,0 - 102,0 %	Melting range	165 - 170 °C	Related substances	
Identity	conforms	Solubility	conforms	- Impurity A	≤ 2,0 %
Appearance	white crystalline powder	Ni (Nickel)	≤ 1 ppm	- Sum of imp. B and C	≤ 2,0 %
Appearance of solution	conforms	Reducing sugars (Glc)	≤ 0,1 %	- Total of all impurities	≤ 2,0 %
Conductivity	≤ 20 µS/cm	Loss on drying (105°C)	≤ 0,5 %	- Unspecified imp. (each)	≤ 0,10 %

Conforms to Ph. Eur. specification



Phenolphthalein, Ph. Eur.

3,3-Bis(4-hydroxyphenyl)isobenzofuran-1(3H)-one

110040

CAS	Molar mass	Formula Hill	EC Number
77-09-8	318,32 g/mol	C ₂₀ H ₁₄ O ₄	201-004-7

Specification

Assay (lod.) (dried subs.)	98,0 - 101,0 %	Acidity or alkalinity	conforms	Sulfate (SO ₄)	≤ 0,0200 %
Identity	conforms	Solubility	conforms	Heavy metals (as Pb)	≤ 0,001 %
Appearance	powder	Related subst. (TLC)	conforms	Loss on drying (105°C)	≤ 0,5 %
Colour	white or almost white	Chloride (Cl)	≤ 0,0100 %	Sulfated ash	≤ 0,1 %
Appearance of solution	conforms				

Conforms to Ph. Eur. specification



Potassium bromide, USP

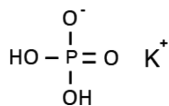
110492

CAS	Molar mass	Formula Hill	EC Number
7758-02-3	119,00 g/mol	BrK	231-830-3

Specification

Assay (as Br ⁻)	151 - 185 mg/ml	Appearance of solution	conforms	Sulfate (SO ₄)	≤ 0,01 %
Assay (dried basis)	98,0 - 100,5 %	Acidity or alkalinity	conforms	Fe (Iron)	≤ 0,0020 %
Identity	conforms	Bromates	conforms	Mg and Ca	≤ 0,02 %
Chlorine	≤ 0,6 %	Iodide (I)	conforms	Loss on drying	≤ 1,0 %

Conforms to USP. specification



Potassium dihydrogen phosphate anhydrous, BP, Ph. Eur.

110555

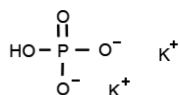
Potassium phosphate monobasic

CAS	Molar mass	Formula Hill	EC Number
7778-77-0	136,09 g/mol	KH ₂ PO ₄	231-913-4

Specification

Assay (dried subs.)	98,0 - 100,5 %	pH value (5%)	4,2 - 4,5	Fe (Iron)	≤ 0,0010 %
Identity	conforms	Chloride (Cl)	≤ 0,0200 %	Na (Sodium)	≤ 0,1 %
Appearance	cryst. powder or crystals	Sulfate (SO ₄)	≤ 0,0300 %	Residual solvents	conforms
Colour	white or almost white	Heavy metals (as Pb)	≤ 0,001 %	Loss on drying (130°C)	≤ 2,0 %
Appearance of solution	conforms	As (Arsenic)	≤ 2 ppm	Reducing substances	conforms
Insoluble matter	≤ 0,01 %				

Conforms to BP, Ph. Eur. specification



di-Potassium hydrogen phosphate anhydrous, Ph. Eur.

110574

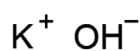
Potassium phosphate dibasic

CAS	Molar mass	Formula Hill	EC Number
7758-11-4	174,20 g/mol	HK ₂ O ₄ P	231-834-5

Specification

Assay (dried subs.)	98,0 - 101,0 %	Chloride (Cl)	≤ 0,0200 %	Fe (Iron)	≤ 0,0010 %
Identity	conforms	Fluoride (F)	≤ 0,001 %	Hg (Mercury)	≤ 1 ppm
Appearance	powder or col. crystals	Sulfate (SO ₄)	≤ 0,1 %	Na (Sodium)	≤ 0,1 %
Appearance of solution	conforms	KH ₂ PO ₄	≤ 2,5 %	Pb (Lead)	≤ 5 ppm
pH value (1%)	8,7 - 9,4	Heavy metals (as Pb)	≤ 0,0010 %	Residual solvents	conforms
Solubility	conforms	As (Arsenic)	≤ 2 ppm	Loss on drying (130°C)	≤ 2,0 %
Water insoluble matter	≤ 0,2 %	Cd (Cadmium)	≤ 1 ppm	Reducing substances	conforms

Conforms to Ph. Eur. specification



Potassium hydroxide pellets, NF, Ph. Eur.

110612

Caustic Potash

CAS	Molar mass	Formula Hill	EC Number
1310-58-3	56,11 g/mol	HKO	215-181-3

Specification

Identity (NF)	conforms	Insoluble substances	conforms	Total nitrogen (N)	≤ 5 ppm
Identity (Ph. Eur.)	conforms	Solubility	conforms	Silicate (SiO ₂)	≤ 0,005 %
Total alkalinity	85,0 - 100,5 %	Carbonate (CO ₃)	≤ 1,0 %	As (Arsenic)	≤ 4 ppm
Appearance	crystalline pellets	Chloride (Cl)	≤ 0,0050 %	Fe (Iron)	≤ 5 ppm
Colour	white or almost white	Phosphate (PO ₄)	≤ 5 ppm	K (Potassium)	≥ 59,9 %
Appearance of solution	conforms	Sulfate (SO ₄)	≤ 5 ppm	Na (Sodium)	≤ 1,0 %

Conforms to NF, Ph. Eur. specification



Potassium iodide, Ph. Eur., USP

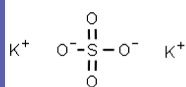
110620

CAS	Molar mass	Formula Hill	EC Number
7681-11-0	166,00 g/mol	IK	231-659-4

Specification

Assay (dried subs.)	99,0 - 100,5 %	Iodate (IO ₃)	≤ 4 ppm	Thiosulfate and barium	conforms
Identity	conforms	Iodate (IO ₃)	conforms	Heavy metals (as Pb)	≤ 0,001 %
Appearance of solution	conforms	NO ⁻³ , NO ⁻² and NH ₃	conforms	Fe (Iron)	≤ 0,002 %
Alkaline impurities	conforms	Sulfate (SO ₄)	≤ 0,0150 %	Loss on drying (105°C)	≤ 1,0 %
Iodate (IO ₃)	conforms	Thiosulfate (S ₂ O ₃)	conforms	Organic volatile imp.	conforms

Conforms to Ph. Eur., USP specification



Potassium sulfate, Ph. Eur. Dipotassium sulfate

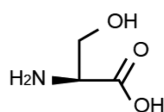
110702

CAS	Molar mass	Formula Hill	EC Number
7778-80-5	174,26 g/mol	K ₂ O ₄ S	231-915-5

Specification

Assay (dried subs.)	98,5 - 101,0 %	Chloride (Cl)	≤ 0,0040 %	Residual solvents	absent
Identity	conforms	Heavy metals (as Pb)	≤ 0,0020 %	Loss on drying (130°C)	≤ 1,0 %
Appearance	crystalline powder	Ca (Calcium)	≤ 0,0200 %	Granulometry	
Colour	white or almost white	Fe (Iron)	≤ 0,0010 %	≤100 µm	15 - 30 %
Appearance of solution	conforms	Mg (Magnesium)	≤ 0,0020 %	≤250 µm	≤ 75 %
Acidity or alkalinity	conforms	Na (Sodium)	≤ 0,10 %	≥500 µm	≤ 15 %

Conforms to Ph. Eur. specification



L-Serine, Ph. Eur. (2S)-2-Amino-3-hydroxypropanoic acid

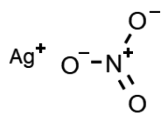
113780

CAS	Molar mass	Formula Hill	EC Number
56-45-1	105,09 g/mol	C ₃ H ₇ NO ₃	200-274-8

Specification

Assay (dried subs.)	98,5 - 101,0 %	Solubility	conforms	Heavy metals	≤ 0,001 %
Identity	conforms	Specific rotation	14,0 - 16,0 °	Fe (Iron)	≤ 0,0010 %
Appearance	crystals or powder	Chloride (Cl)	≤ 0,0200 %	Ninhydrin-positive subst.	≤ 0,5 %
Colour	white or almost white	Sulfate (SO ₄)	≤ 0,0300 %	Loss on drying	≤ 0,5 %
Appearance of solution	conforms	NH ₄ (Ammonium)	≤ 0,02 %	Residue after ignition	≤ 0,1 %

Conforms to Ph. Eur. specification



Silver nitrate, BP, Ph. Eur., USP
Nitric acid silver(I) salt

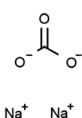
111402

CAS	Molar mass	Formula Hill	EC Number
7761-88-8	169,87 g/mol	AgNO ₃	231-853-9

Specification

Assay	99,80 - 100,50 %	Appearance of solution	conforms	Aluminium and Lead	conforms
Identity (BP, Ph. Eur.)	conforms	Clarity of solution	clear and colourless	Copper and Bismuth	conforms
Identity (USP)	conforms	Colour	white almost white	Cu (Copper)	no blue colour is produc.
Appearance	cryst. powder or crystals	Acidity or alkalinity	conforms	Foreign salts	≤ 0,3 %

Conforms to BP, Ph. Eur., USP specification



Sodium carbonate anhydrous, NF, Ph. Eur.
Carbonic acid, disodium salt / Disodium carbonate

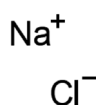
111552

CAS	Molar mass	Formula Hill	EC Number
497-19-8	105,99 g/mol	CNa ₂ O ₃	207-838-8

Specification

Assay (dried subs.)	99,5 - 100,5 %	Solubility	conforms	Fe (Iron)	≤ 0,001 %
Identity (NF)	conforms	Chloride (Cl)	≤ 0,0125 %	Hg (Mercury)	≤ 1 ppm
Identity (Ph. Eur.)	conforms	Sulfate (SO ₄)	≤ 0,0030 %	Pb (Lead)	≤ 4 ppm
Appearance	slightly granular powder	Alkali hydroxides, HCO ⁻³	conforms	Loss on drying (250°C)	≤ 1,0 %
Colour	white or almost white	As (Arsenic)	≤ 3 ppm	Water (NF)	≤ 0,5 %
Appearance of solution	conforms				

Conforms to NF, Ph. Eur. specification



Sodium chloride, BP, Ph. Eur., USP
Halite

111582

CAS	Molar mass	Formula Hill	EC Number
7647-14-5	58,44 g/mol	ClNa	231-598-3

Specification

Assay (dried subs.)	99,0 - 100,5 %	Bromide (Br)	≤ 0,0100 %	As (Arsenic)	≤ 1 ppm
Identity (BP, Ph. Eur.)	conforms	Ferrocyanides	conforms	Ba (Barium)	conforms
Identity (USP)	conforms	Fe (Iron)	≤ 0,003 %	Fe (Iron)	≤ 2 ppm
Appearance	powder, cryst. or pearls	Iodide (I)	conforms	K (Potassium)	≤ 0,0500 %
Colour	white or almost white	Nitrite (354nm; 10%)	≤ 0,01	Mg and Ca	≤ 0,0100 %
Appearance of solution	conforms	Phosphate (PO ₄)	≤ 0,0025 %	Residual solvent	conforms
Acidity or alkalinity	conforms	Sulfate (SO ₄)	≤ 0,0200 %	Loss on drying (105°C)	≤ 0,5 %
Solubility	conforms	Al (Aluminium)	≤ 0,2 ppm		

Conforms to BP, Ph. Eur., USP specification



tri-Sodium citrate dihydrate, Ph. Eur., USP
Citric acid trisodium salt dihydrate / Sodium citrate tribasic dihydrate

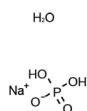
111612

CAS	Molar mass	Formula Hill	EC Number
6132-04-3	294,10 g/mol	$C_6H_5Na_3O_7 \cdot 2H_2O$	200-675-3

Specification

Assay (Perchloric acid)	99,0 - 100,5 %	Acidity or alkalinity	conforms	Sulfate (SO ₄)	≤ 0,0150 %
Identity (Ph. Eur.)	conforms	Alkalinity	conforms	Tartrate (C ₄ H ₄ O ₆)	conforms
Identity (USP)	conforms	Solubility	conforms	Residual solvents	conforms
Appearance	powder or granul. cryst.	Chloride (Cl)	≤ 0,0050 %	Readily carbon. subst.	conforms
Colour	white or almost white	Oxalate (C ₂ O ₄)	≤ 0,0300 %	Water	11,0 - 13,0 %
Appearance of solution	conforms				

Conforms to Ph. Eur., USP specification



Sodium dihydrogen phosphate monohydrate, BP, Ph. Eur., USP
Monosodium phosphate monohydrate

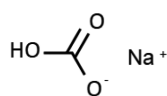
120011

CAS	Molar mass	Formula Hill	EC Number
10049-21-5	137,99 g/mol	$H_2NaO_4P \cdot H_2O$	231-449-2

Specification

Assay	98,0 - 100,5 %	pH value (5%)	4,2 - 4,5	Cd, Pb	≤ 0,5 ppm
Identity (BP, Ph. Eur, USP)	conforms	Chloride (Cl)	≤ 0,0140 %	Co, Fe	≤ 5 ppm
Phosphorus pentoxide	51,0 - 52,0 %	Fluoride (F)	≤ 0,0010 %	Ni (Nickel)	≤ 6 ppm
Sodium oxide (Na ₂ O)	22,0 - 23,0 %	Sulfate (SO ₄)	≤ 0,0300 %	V (Vanadium)	≤ 3 ppm
Appearance	white almost white crys.	Heavy metals (as Pb)	≤ 5 ppm	Loss on drying (130°C)	11,5 - 14,5 %
Appearance of solution	conforms	Al, Ca and related el.	conforms	Reducing substances	conforms
Insoluble matter in water	≤ 0,01 %	As, Hg	≤ 1 ppm	Water	10,0 - 15,0 %

Conforms to BP, Ph. Eur., USP specification



Sodium hydrogen carbonate, Ph. Eur., USP
Sodium bicarbonate

111721

CAS	Molar mass	Formula Hill	EC Number
144-55-8	84,01 g/mol	$CHNaO_3$	205-633-8

Specification

Bicarbonate	99,0 - 100,5 %	Carbonate (CO ₃)	≤ 0,23 %	Ca (Calcium)	≤ 0,0100 %
Identity (Ph. Eur., USP)	conforms	Chloride (Cl)	≤ 0,0150 %	Cu (Copper)	≤ 1 ppm
Total alkalinity	99,0 - 100,5 %	Sulfate (SO ₄)	≤ 0,0150 %	Fe (Iron)	≤ 5 ppm
Appearance	crystalline powder	Sulfur compounds (SO ₄)	≤ 0,015 %	Mg (Magnesium)	≤ 0,004 %
Colour	white or almost white	NH ₄ (Ammonium)	≤ 0,0020 %	Limit of organics	≤ 0,01 %
Appearance of solution	conforms	Heavy metals (as Pb)	≤ 5 ppm	Loss on drying	≤ 0,25 %
pH value (5%)	≤ 8,6	Al (Aluminium)	≤ 2 ppm	Organic volatile imp.	conforms
Solubility	conforms	As (Arsenic)	≤ 2 ppm		

Conforms to Ph. Eur., USP. specification



Sodium hydroxide micropearls, NF, Ph. Eur.

111773

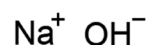
Caustic soda

CAS	Molar mass	Formula Hill	EC Number
1310-73-2	40,00 g/mol	HNaO	215-185-5

Specification

Assay	97,0 - 100,5 %	Colour	white or almost white	Carbonate (CO ₃)	≤ 2,0 %
Identity (NF)	conforms	Insoluble substances	conforms	Chloride (Cl)	≤ 0,0200 %
Identity (Ph. Eur.)	conforms	Organic matter	conforms	Sulfate (SO ₄)	≤ 0,0200 %
Appearance	micropearls	pH value	≥ 11,0	Fe (Iron)	≤ 0,0010 %
Appearance of solution	conforms	Solubility	conforms	K (Potassium)	conforms

Conforms to NF, Ph. Eur.. specification



Sodium hydroxide pellets, NF, Ph. Eur.

111772

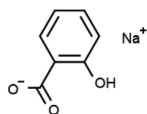
Caustic soda

CAS	Molar mass	Formula Hill	EC Number
1310-73-2	40,00 g/mol	HNaO	215-185-5

Specification

Assay	97,0 - 100,5 %	Insoluble substances	conforms	Chloride (Cl)	≤ 0,0200 %
Identity (NF)	conforms	Organic matter	conforms	Sulfate (SO ₄)	≤ 0,0200 %
Identity (Ph. Eur.)	conforms	pH value	≥ 11,0	Fe (Iron)	≤ 0,0010 %
Appearance of solution	conforms	Carbonate (CO ₃)	≤ 2,0 %	K (Potassium)	conforms

Conforms to NF, Ph. Eur. specification



Sodium salicylate, Ph. Eur.

111891

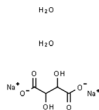
Sodium 2-hydroxybenzoate / 2-Hydroxybenzoic acid sodium salt

CAS	Molar mass	Formula Hill	EC Number
54-21-7	160,10 g/mol	C ₇ H ₅ NaO ₃	200-198-0

Specification

Assay (dried subs.)	99,0 - 101,0 %	Acidity	conforms	Sulfate (SO ₄)	≤ 0,0600 %
Identity	conforms	Solubility	conforms	Heavy metals (as Pb)	≤ 0,002 %
Appearance	white crystalline powder	Chloride (Cl)	≤ 0,0200 %	Loss on drying	≤ 0,5 %
Appearance of solution	conforms				

Conforms to Ph. Eur. specification



di-Sodium tartrate dihydrate, USP

117870

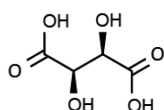
Disodium L-tartrate / Disodium (+)-2,3-dihydroxybutanedioic acid

CAS	Molar mass	Formula Hill	EC Number
6106-24-7	230,08 g/mol	C ₄ H ₄ Na ₂ O ₆ · 2H ₂ O	212-773-3

Specification

Conforms to USP specification

Assay (dried subs.)	99,0 - 100,5 %	Chloride (Cl)	≤ 0,01 %	Hg (Mercury)	≤ 1 ppm
Identity	conforms	As (Arsenic)	≤ 3 ppm	Pb (Lead)	≤ 2 ppm
pH value (10% solution)	7,0 - 9,0	Fe (Iron)	≤ 0,01 %	Loss on drying (150°C)	14,0 - 17,0 %



L-(+)-Tartaric acid, NF, Ph. Eur.

112402

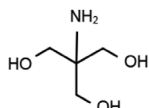
L-Threonic acid / (2R,3R)-(+)-Tartaric acid

CAS	Molar mass	Formula Hill	EC Number
87-69-4	150,09 g/mol	C ₄ H ₆ O ₆	201-766-0

Specification

Conforms to NF, Ph. Eur. specification

Assay (dried subs.)	99,7 - 100,5 %	Chloride (Cl)	≤ 0,01 %	Oxalic acid (C ₂ H ₂ O ₄)	≤ 0,036 %
Identity (NF)	conforms	Oxalate (C ₂ O ₄)	conforms	Ca (Calcium)	≤ 0,02 %
Identity (Ph. Eur.)	conforms	Sulfate (SO ₄)	conforms	Loss on drying (105°C)	≤ 0,2 %
Appearance of solution	conforms	Sulfate (SO ₄)	≤ 0,015 %	Residue after ignition	≤ 0,1 %
Specific rotation	12,0 - 12,8 °				



Tris(hydroxymethyl) aminomethane, Ph. Eur., USP

113314

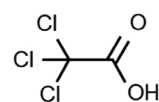
Trometamol / Tris base

CAS	Molar mass	Formula Hill	EC Number
77-86-1	121,14 g/mol	C ₄ H ₁₁ NO ₃	201-064-4

Specification

Conforms to Ph. Eur., USP. specification

Assay (dried subs.)	99,0 - 100,5 %	Melting range	168,0 - 172,0 °C	Related subst. (TLC)	≤ 1,0 %
Identity (Ph. Eur.)	conforms	pH value (5%)	10,0 - 11,5	Loss on drying	≤ 0,5 %
Identity (USP)	conforms	Chloride (Cl)	≤ 0,0100 %	Residue after ignition	≤ 0,1 %
Appearance	white crystalline powder	Fe (Iron)	≤ 0,0010 %	Sulfated ash	≤ 0,1 %
Appearance of solution	conforms				



Trichloroacetic acid, Ph. Eur.

112961

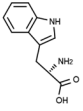
TCA

CAS	Molar mass	Formula Hill	EC Number
76-03-9	163,39 g/mol	C ₂ HCl ₃ O ₂	200-927-2

Specification

Conforms to Ph. Eur., specification

Assay	98,0 - 100,5 %	Colour	white or almost white	Chloride (Cl)	≤ 0,0100 %
Identity	conforms	Appearance of solution	conforms	Sulfated ash	≤ 0,1 %
Appearance	crys. mass or col. cryst.	Solubility	conforms		



L-Tryptophan, USP
(S)-2-Amino-3-(3indolyl)propionic acid

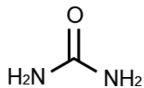
113410

CAS	Molar mass	Formula Hill	EC Number
73-22-3	204,23 g/mol	C ₁₁ H ₁₂ N ₂ O ₂	200-795-6

Specification

Conforms to USP specification

Assay	98,5 - 101,5 %	pH value	5,5 - 7,0	Fe (Iron)	≤ 0,0030 %
Identity	conforms	Specific rotation	-32,8 - -29,4 °	Loss on drying	≤ 0,30 %
Appearance	cryst. or cryst. powder	Chloride (Cl)	≤ 0,0500 %	Organic volatile imp.	conforms
Colour	white to yellowish	Sulfate (SO ₄)	≤ 0,0300 %	Residue after ignition	≤ 0,1 %



Urea, Ph. Eur.
Carbamide

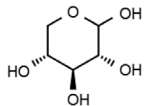
113471

CAS	Molar mass	Formula Hill	EC Number
57-13-6	60,06 g/mol	CH ₄ N ₂ O	200-315-5

Specification

Conforms to Ph. Eur. specification

Assay (dried subs.)	98,5 - 101,5 %	Appearance of solution	conforms	NH ₄ (Ammonium)	≤ 0,0500 %
Identity	conforms	Alkalinity	conforms	Biuret	≤ 0,1 %
Appearance	powder or crystals	Insoluble matter	≤ 0,001 %	Loss on drying (105°C)	≤ 1,0 %
Colour	white or almost white	Solubility	conforms	Sulfated ash	≤ 0,1 %



D(+)-Xylose, Ph. Eur.
Xylose

113632

CAS	Molar mass	Formula Hill	EC Number
58-86-6	150,13 g/mol	C ₅ H ₁₀ O ₅	200-400-7

Specification

Conforms to Ph. Eur. specification

Identity	conforms	Appearance of solution	conforms	Heavy metals (as Pb)	≤ 0,0020 %
Appearance	white crystalline powder	Specific rotation	18,5 - 19,5 °	Loss on drying	≤ 0,5 %
Acidity or alkalinity	conforms	Chloride (Cl)	≤ 0,0330 %	Sulfated ash	≤ 0,10 %





A DIFFERENT KIND OF CHEMISTRY

At DC Fine Chemicals we are committed to quality products and customer satisfaction. A personal bespoke approach ensures that customers are guaranteed high quality and dependable service.

As an ISO 9001 accredited company we operate according to the highest standards and are fully compliant with international quality norms.

We offer an extensive portfolio of high quality critical raw materials which can be shipped promptly from our own facility located near Barcelona, Spain.

Access to over 15.000 raw materials through our product data base.

По вопросам продаж и поддержки обращайтесь:

Алматы (7273)495-231
Ангарск (3955)60-70-56
Архангельск (8182)63-90-72
Астрахань (8512)99-46-04
Барнаул (3852)73-04-60
Белгород (4722)40-23-64
Благовещенск (4162)22-76-07
Брянск (4832)59-03-52
Владивосток (423)249-28-31
Владикавказ (8672)28-90-48
Владимир (4922)49-43-18
Волгоград (844)278-03-48
Вологда (8172)26-41-59
Воронеж (473)204-51-73
Екатеринбург (343)384-55-89

Иваново (4932)77-34-06
Ижевск (3412)26-03-58
Иркутск (395)279-98-46
Казань (843)206-01-48
Калининград (4012)72-03-81
Калуга (4842)92-23-67
Кемерово (3842)65-04-62
Киров (8332)68-02-04
Коломна (4966)23-41-49
Кострома (4942)77-07-48
Краснодар (861)203-40-90
Красноярск (391)204-63-61
Курск (4712)77-13-04
Курган (3522)50-90-47
Липецк (4742)52-20-81

Магнитогорск (3519)55-03-13
Москва (495)268-04-70
Мурманск (8152)59-64-93
Набережные Челны (8552)20-53-41
Нижегород (831)429-08-12
Новокузнецк (3843)20-46-81
Ноябрьск (3496)41-32-12
Новосибирск (383)227-86-73
Омск (3812)21-46-40
Орел (4862)44-53-42
Оренбург (3532)37-68-04
Пенза (8412)22-31-16
Петрозаводск (8142)55-98-37
Псков (8112)59-10-37
Пермь (342)205-81-47

Ростов-на-Дону (863)308-18-15
Рязань (4912)46-61-64
Самара (846)206-03-16
Санкт-Петербург (812)309-46-40
Саратов (845)249-38-78
Севастополь (8692)22-31-93
Саранск (8342)22-96-24
Симферополь (3652)67-13-56
Смоленск (4812)29-41-54
Сочи (862)225-72-31
Ставрополь (8652)20-65-13
Сургут (3462)77-98-35
Сыктывкар (8212)25-95-17
Тамбов (4752)50-40-97
Тверь (4822)63-31-35

Тольятти (8482)63-91-07
Томск (3822)98-41-53
Тула (4872)33-79-87
Тюмень (3452)66-21-18
Ульяновск (8422)24-23-59
Улан-Удэ (3012)59-97-51
Уфа (347)229-48-12
Хабаровск (4212)92-98-04
Чебоксары (8352)28-53-07
Челябинск (351)202-03-61
Череповец (8202)49-02-64
Чита (3022)38-34-83
Якутск (4112)23-90-97
Ярославль (4852)69-52-93

Россия +7(495)268-04-70

Казахстан +7(7172)727-132

Киргизия +996(312)96-26-47

эл.почта: den@nt-rt.ru || сайт: <https://dcfine.nt-rt.ru/>